

Subject Information

Name: hossein fadai

Subject ID: 1552152571

Date of Birth:

Age: 43.00

Gender: m

Handedness: r

EEG ID: 0033

Date of Test:

Time of Test:

Technician:

Eyes Condition: Eyes Open

Clinician:

Medication:

Comments:

Technical Information

Record Length: 14:58

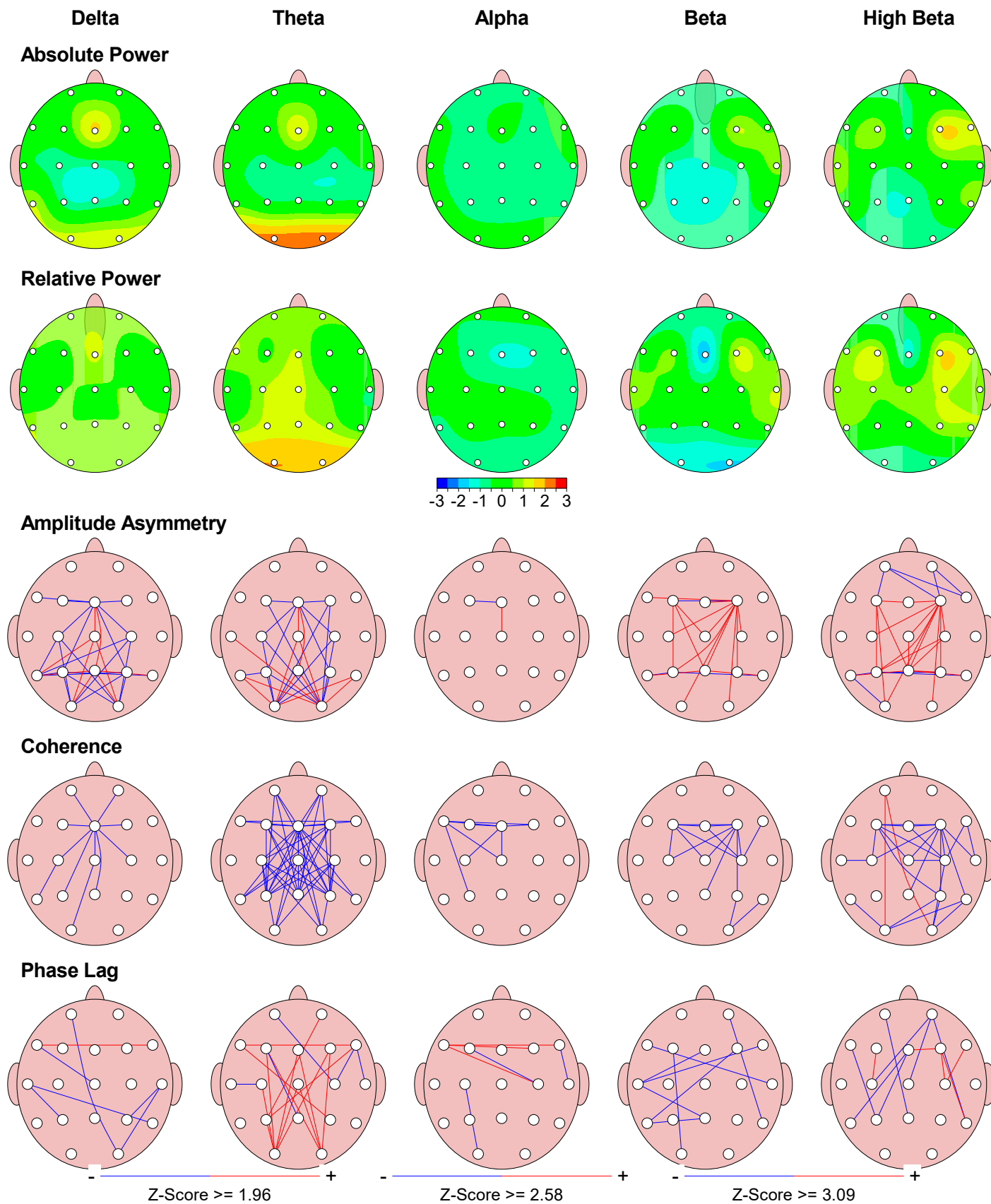
Edit Length: 02:00

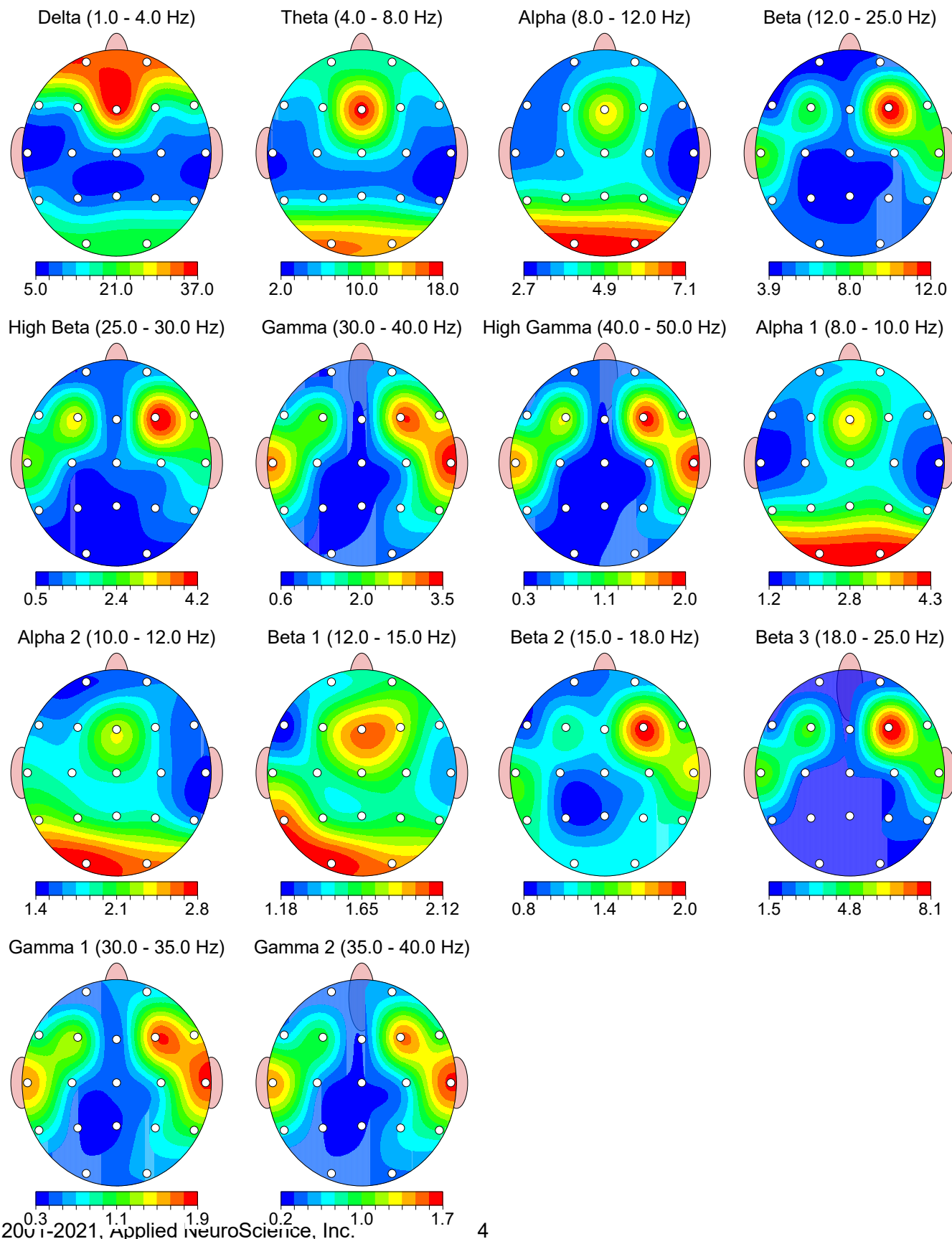
Reliability:	Split Half	Test Retest
Average	0.97	0.91
FP1	0.91	0.96
FP2	0.92	0.99
F3	0.98	0.87
F4	0.99	0.88
C3	1.00	0.91
C4	0.99	0.89
P3	0.98	0.97
P4	0.97	0.89
O1	0.98	0.97
O2	0.99	0.95
F7	0.98	0.98
F8	0.96	0.86
T3	0.99	0.82
T4	0.96	0.85
T5	0.99	0.88
T6	0.98	0.85
Fz	0.97	0.92
Cz	1.00	0.95
Pz	0.99	0.96

Sampling Rate: 500

Collection Hardware: ScienceBeam eWave

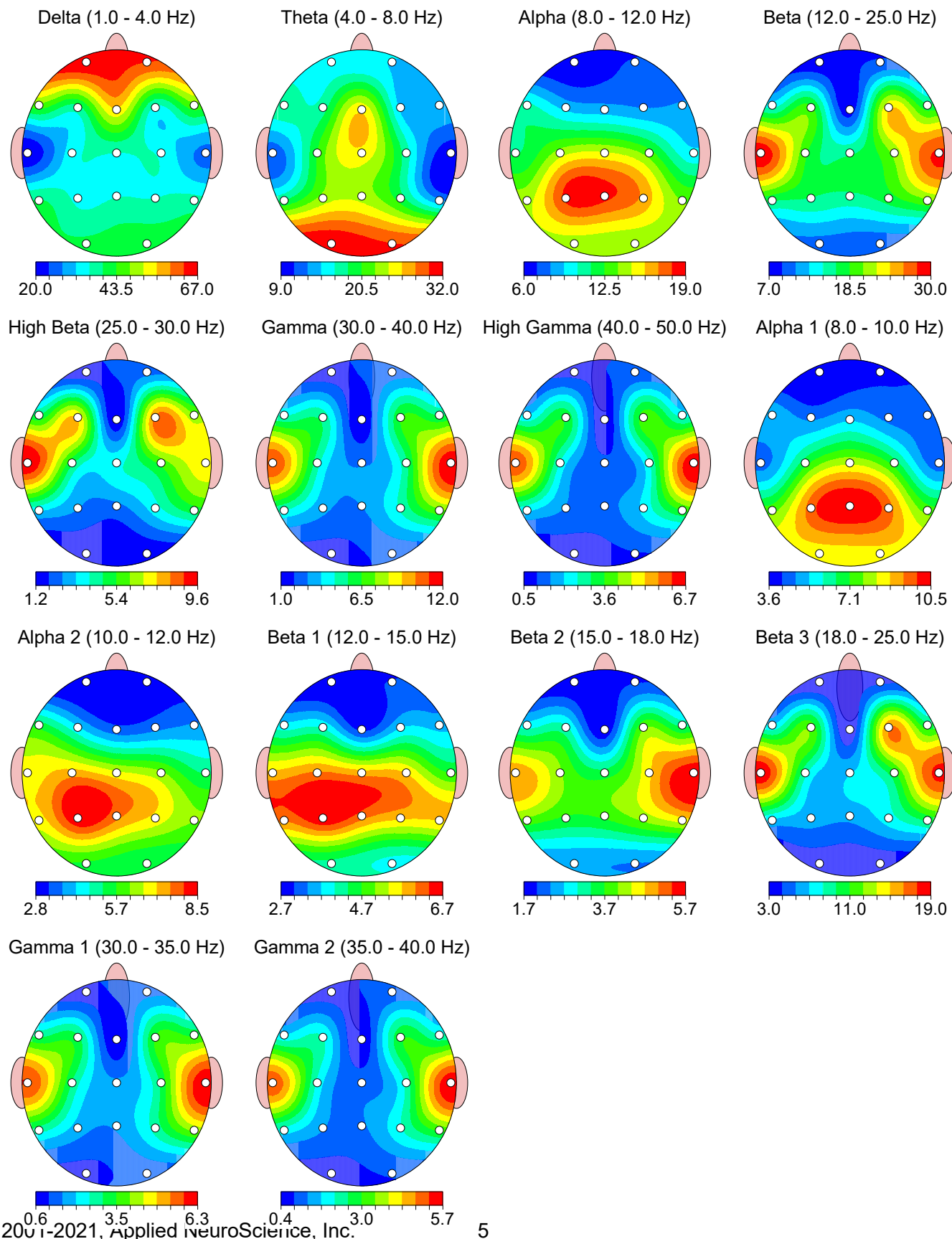
Z Scored FFT Summary Information



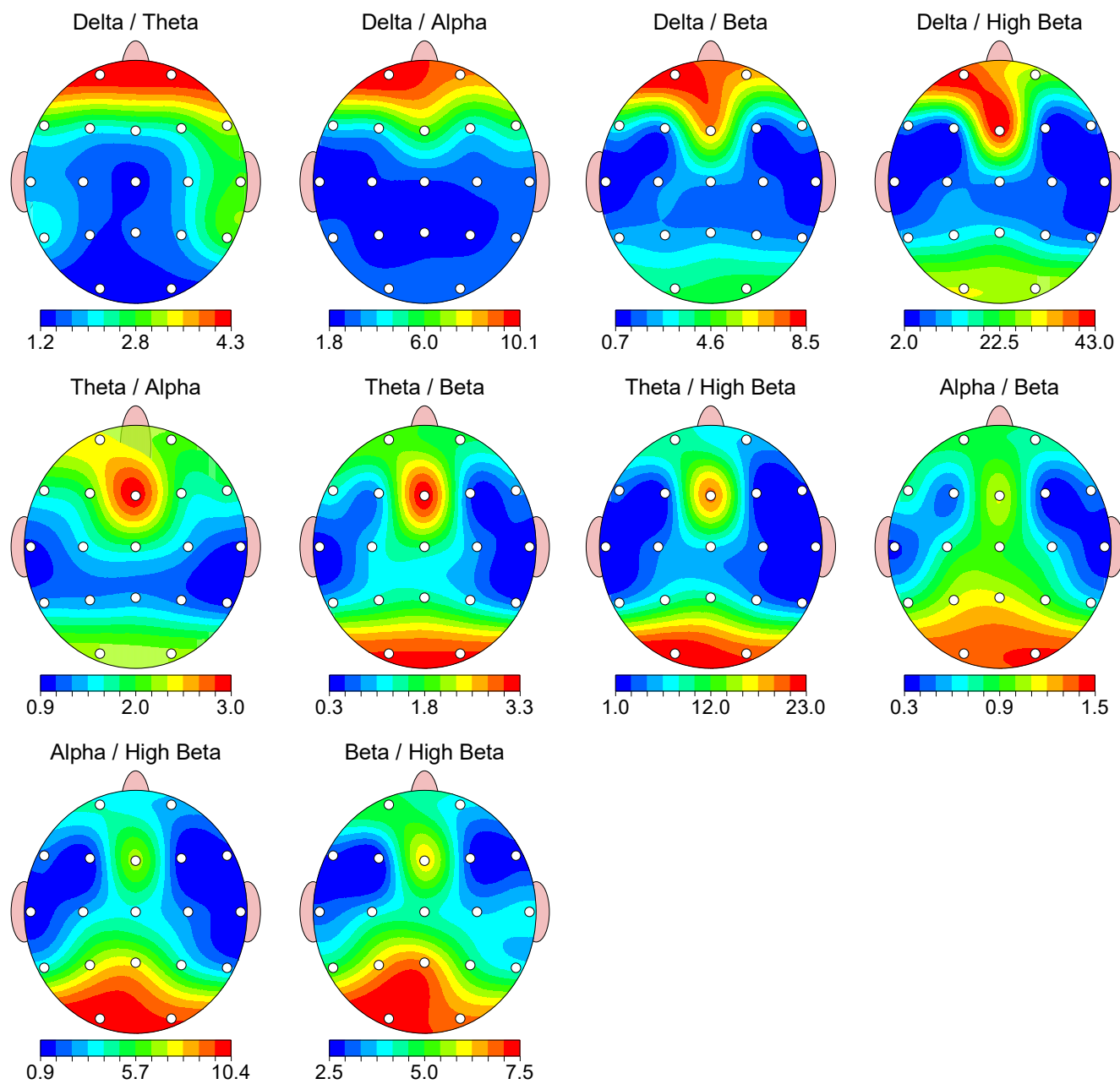
FFT Absolute Power ($\mu\text{V Sq}$)

FFT Relative Power (%)

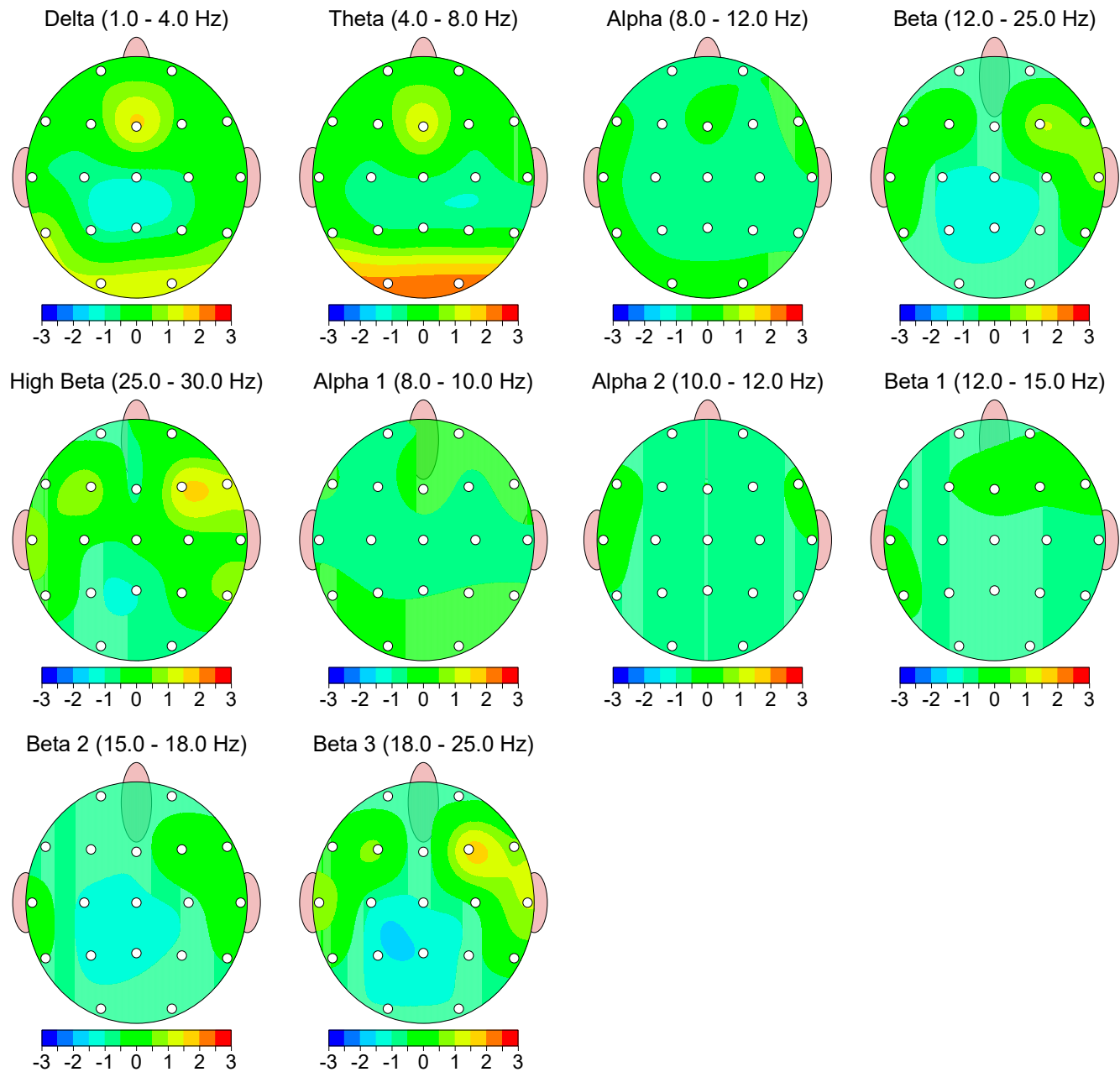
Warning: Absolute power must be consulted to interpret relative power.



FFT Power Ratio

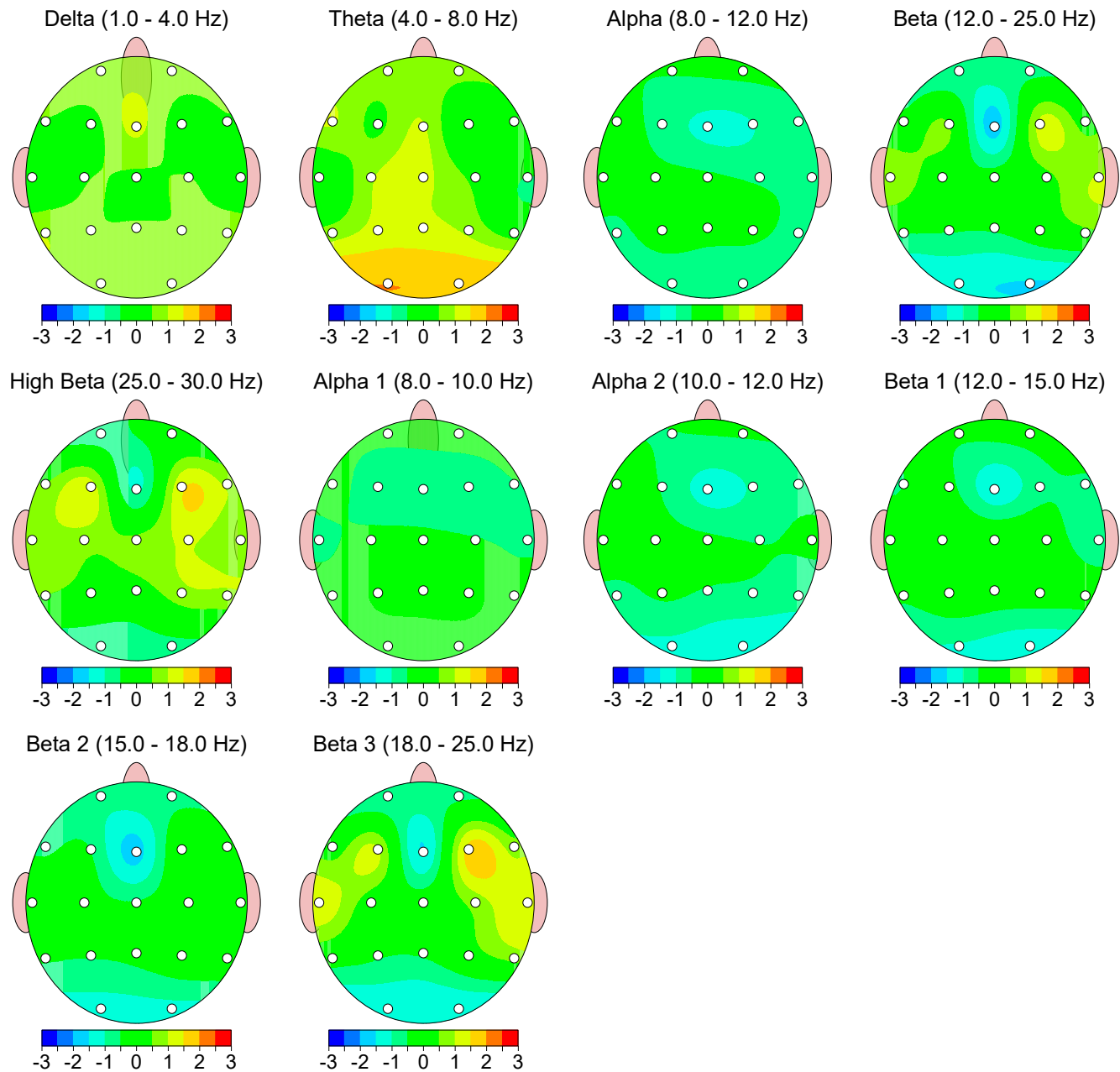


Z Scored FFT Absolute Power

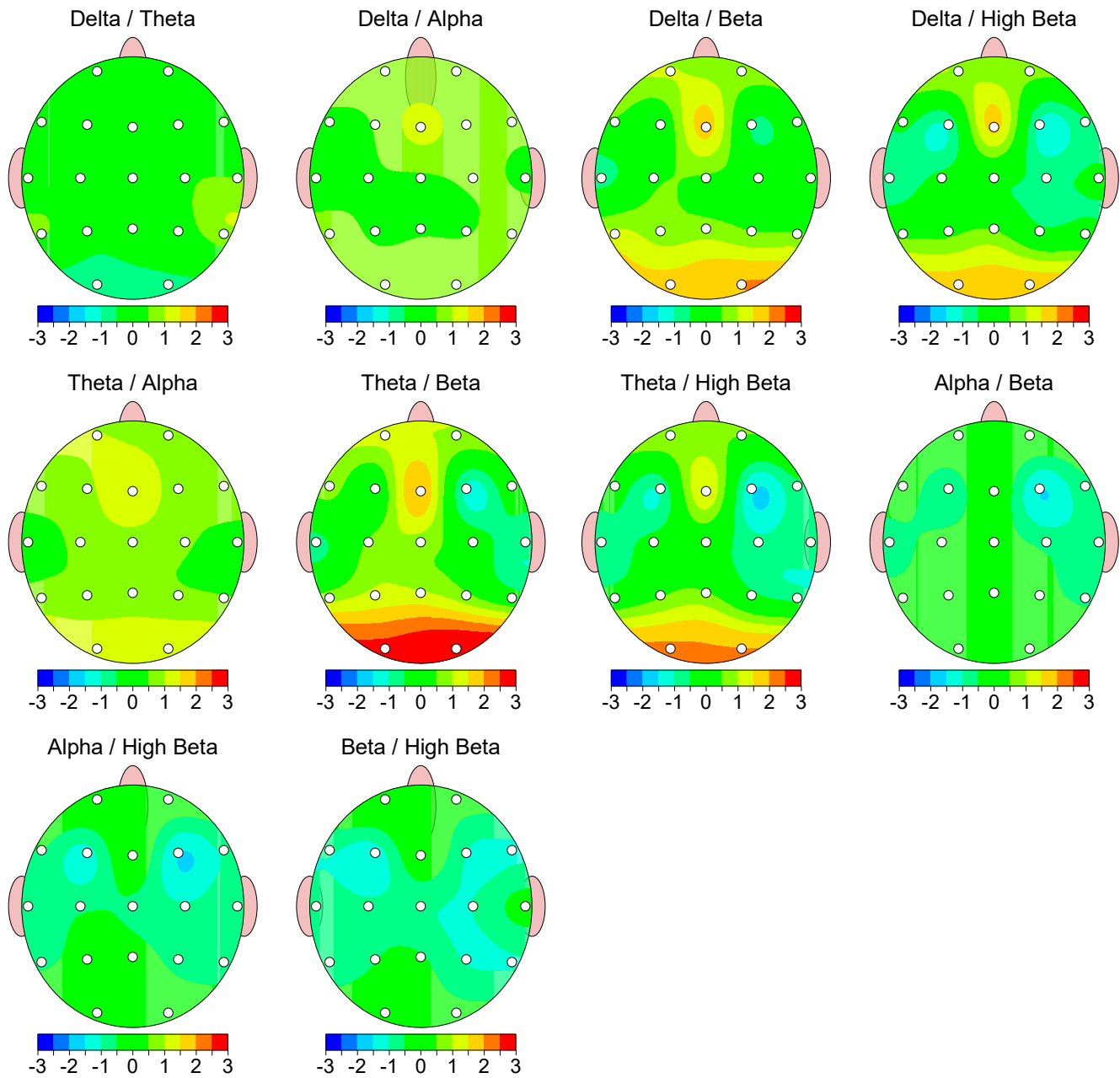


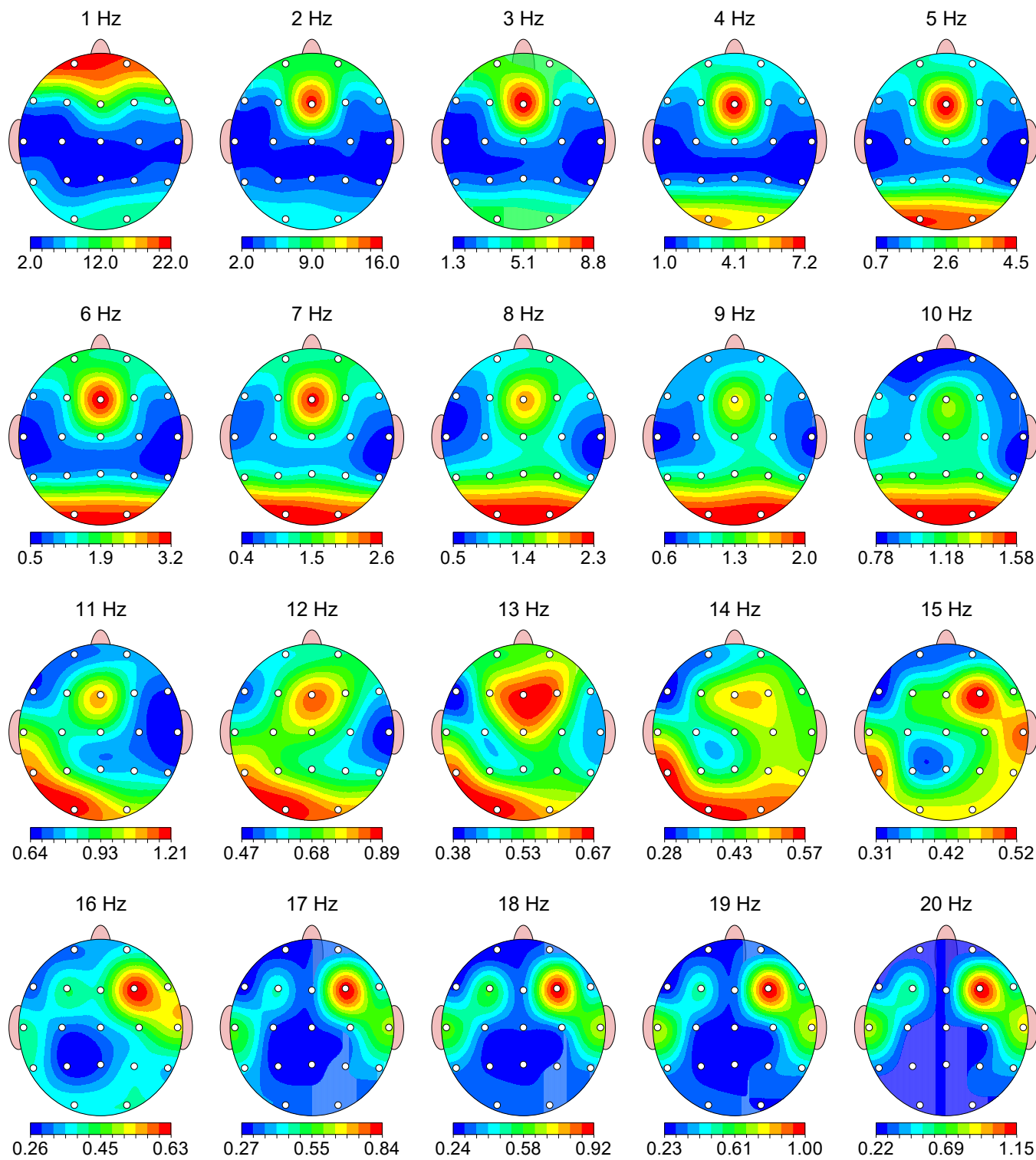
Z Scored FFT Relative Power

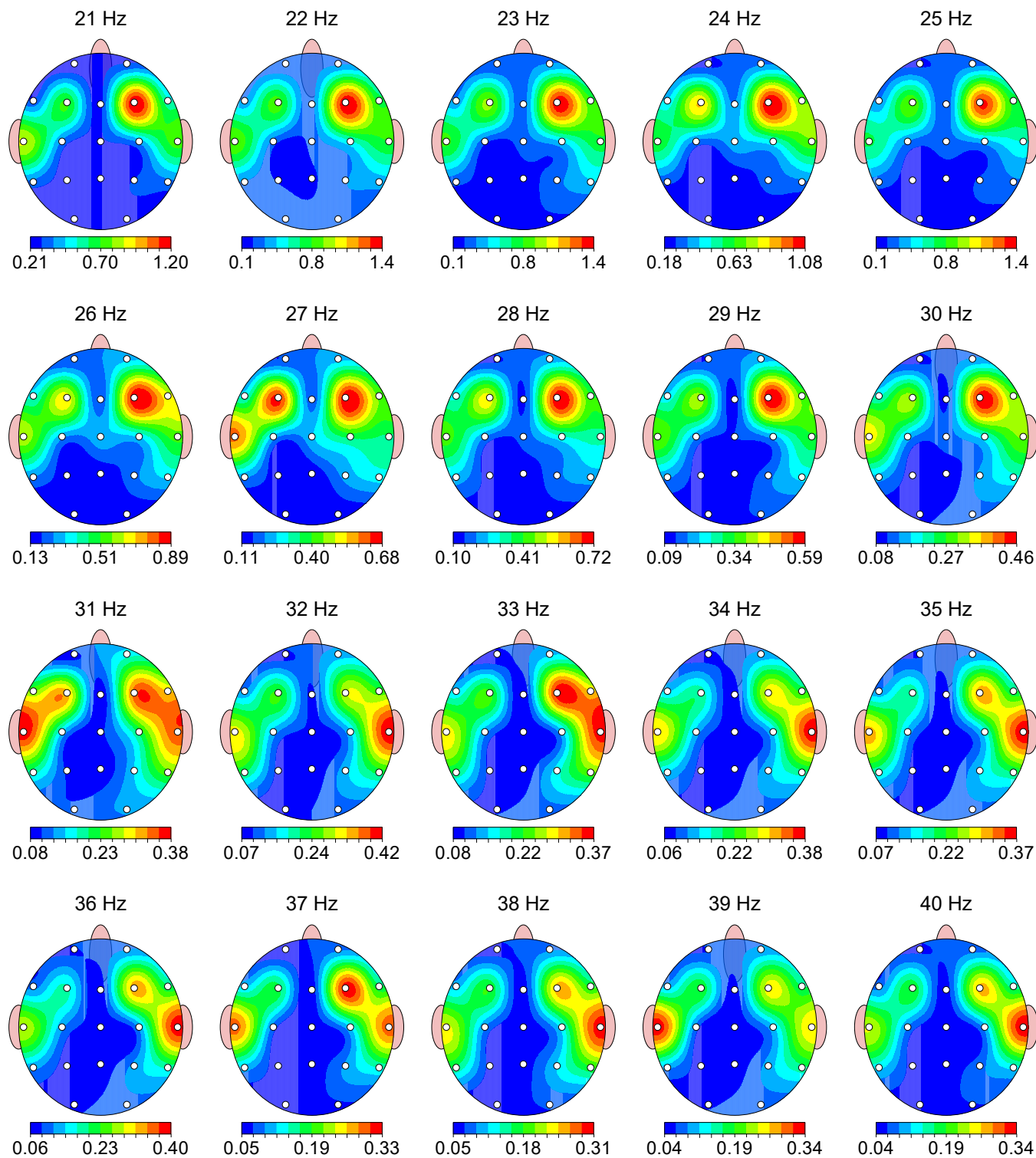
Warning: Absolute power must be consulted to interpret relative power.

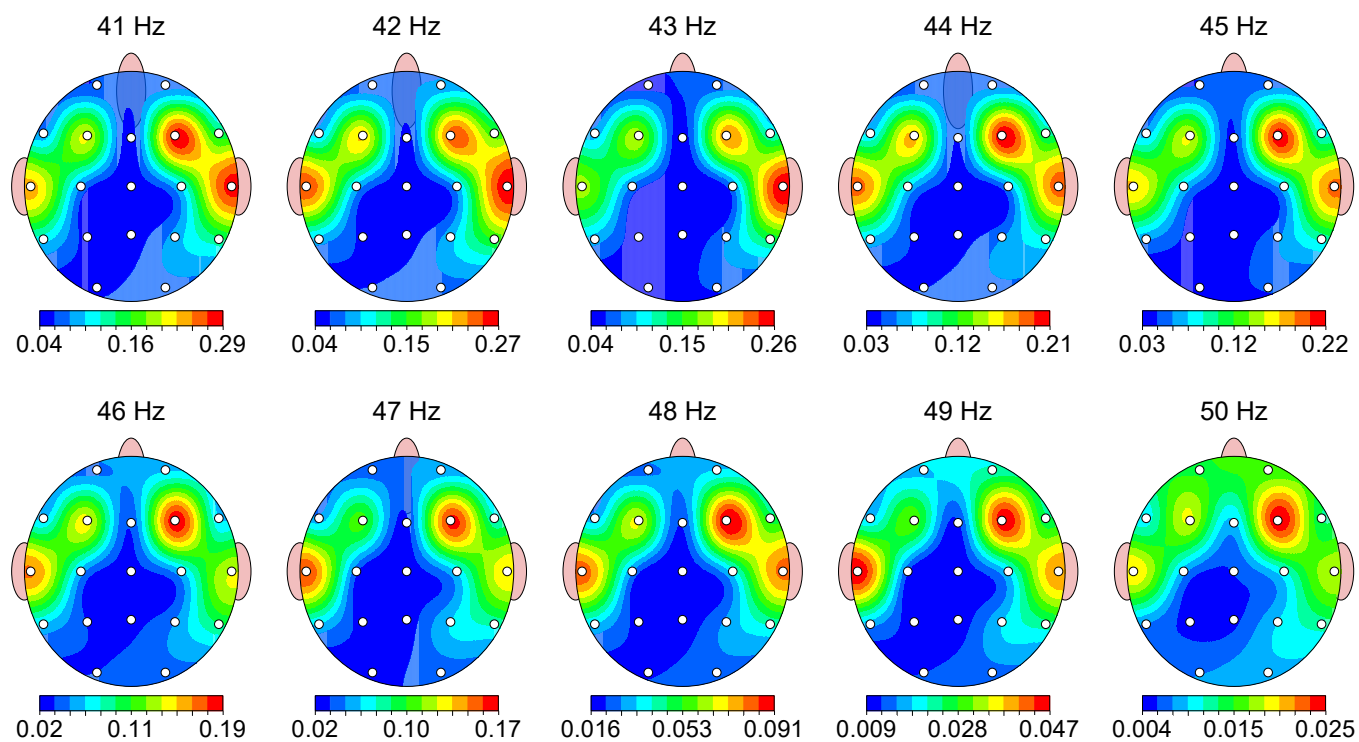


Z Scored FFT Power Ratio



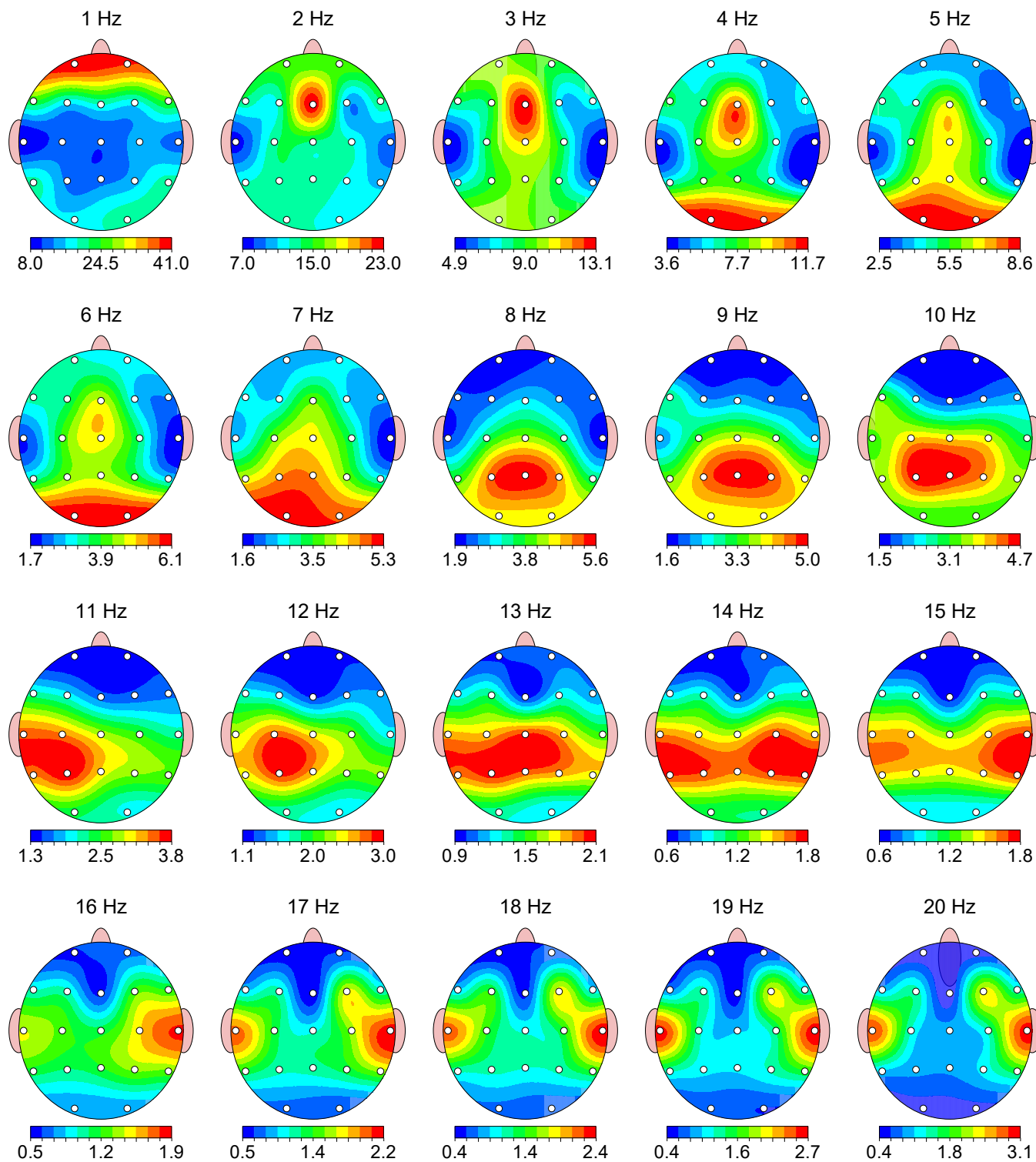
FFT Absolute Power ($\mu\text{V Sq}$)

FFT Absolute Power ($\mu\text{V Sq}$)

FFT Absolute Power ($\mu\text{V Sq}$)

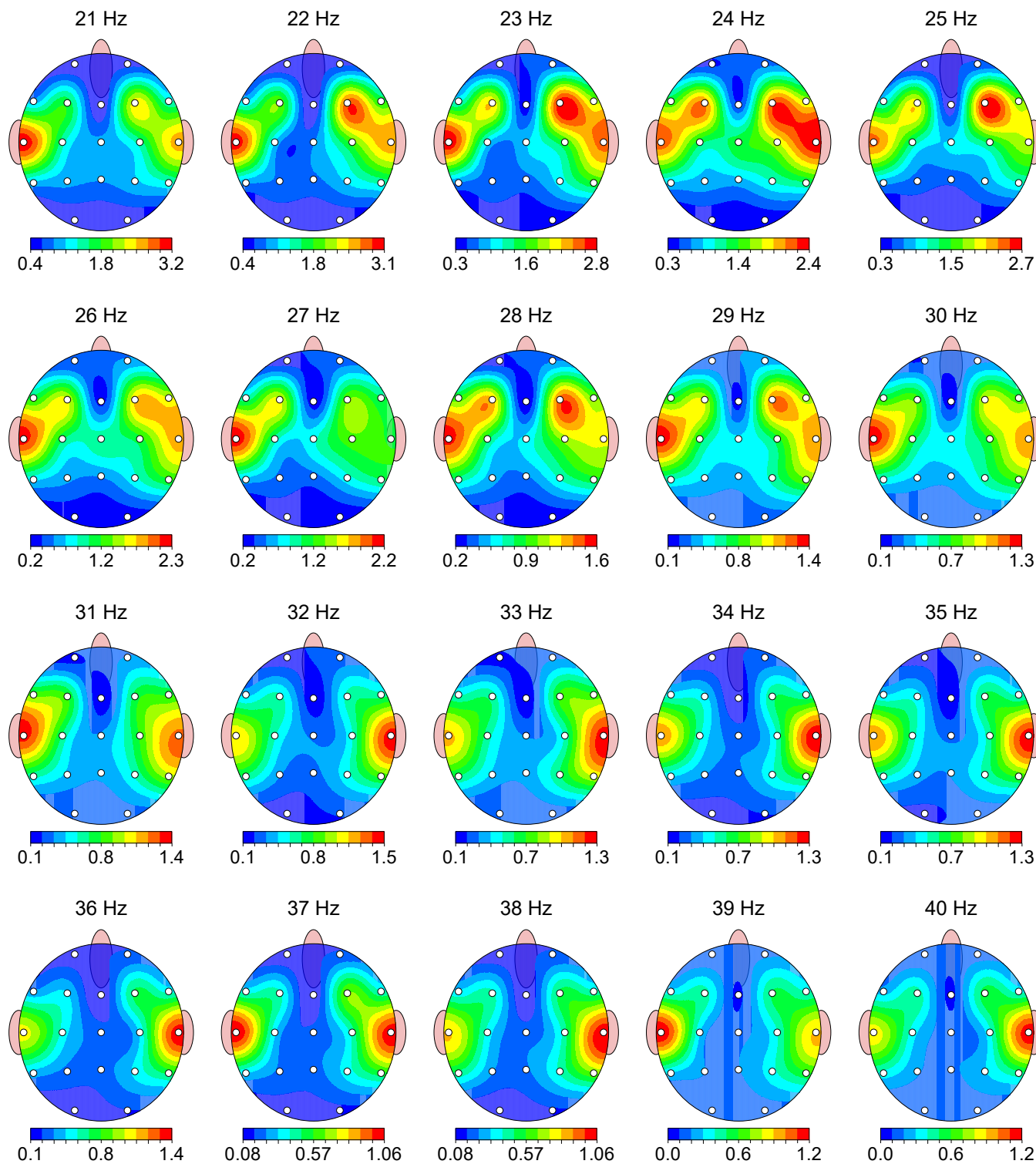
FFT Relative Power (%)

Warning: Absolute power must be consulted to interpret relative power.



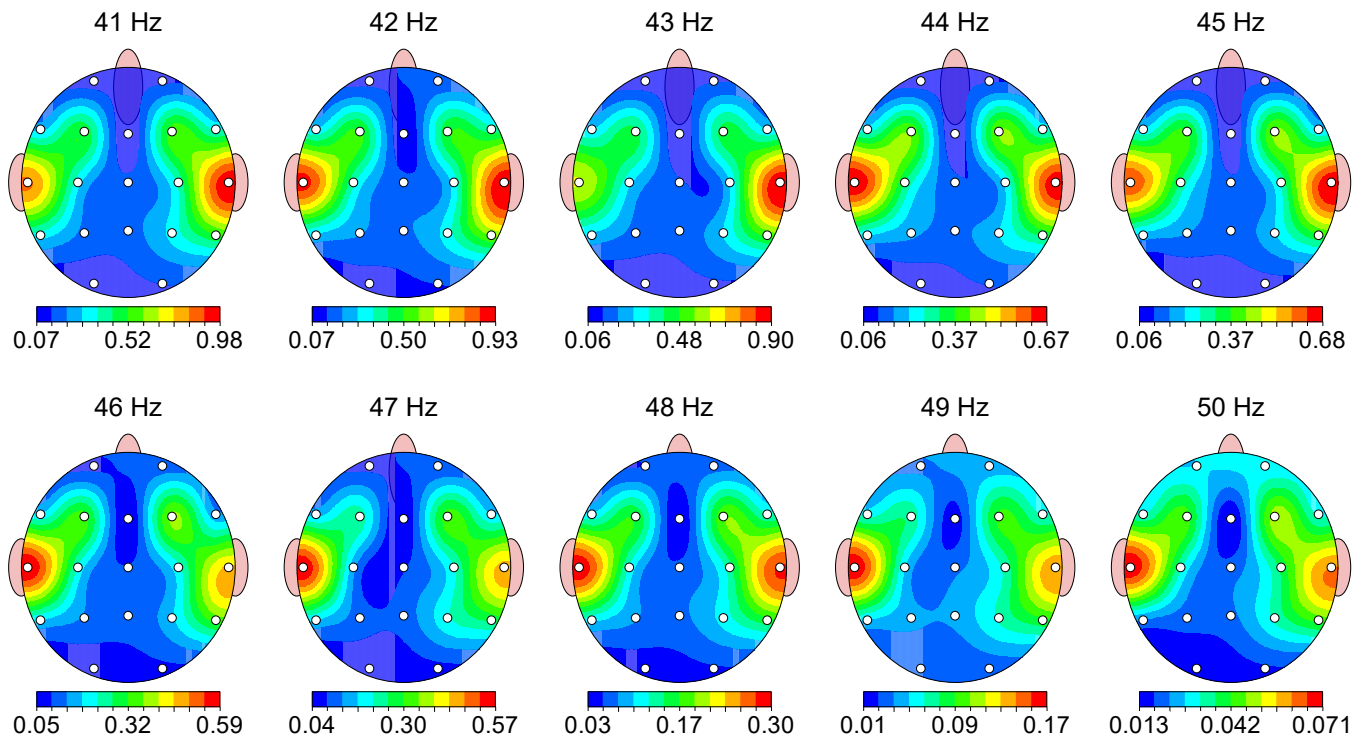
FFT Relative Power (%)

Warning: Absolute power must be consulted to interpret relative power.

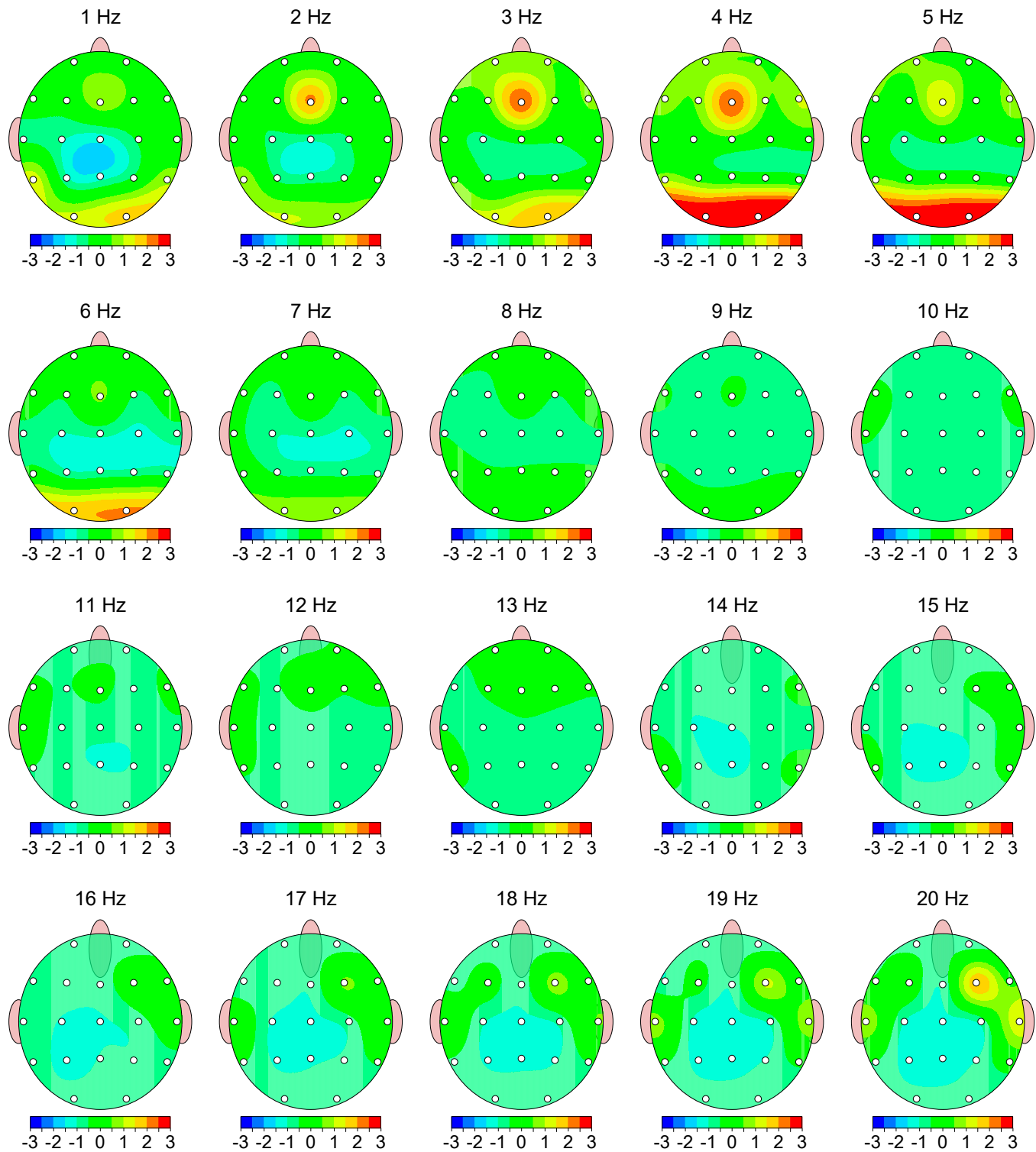


FFT Relative Power (%)

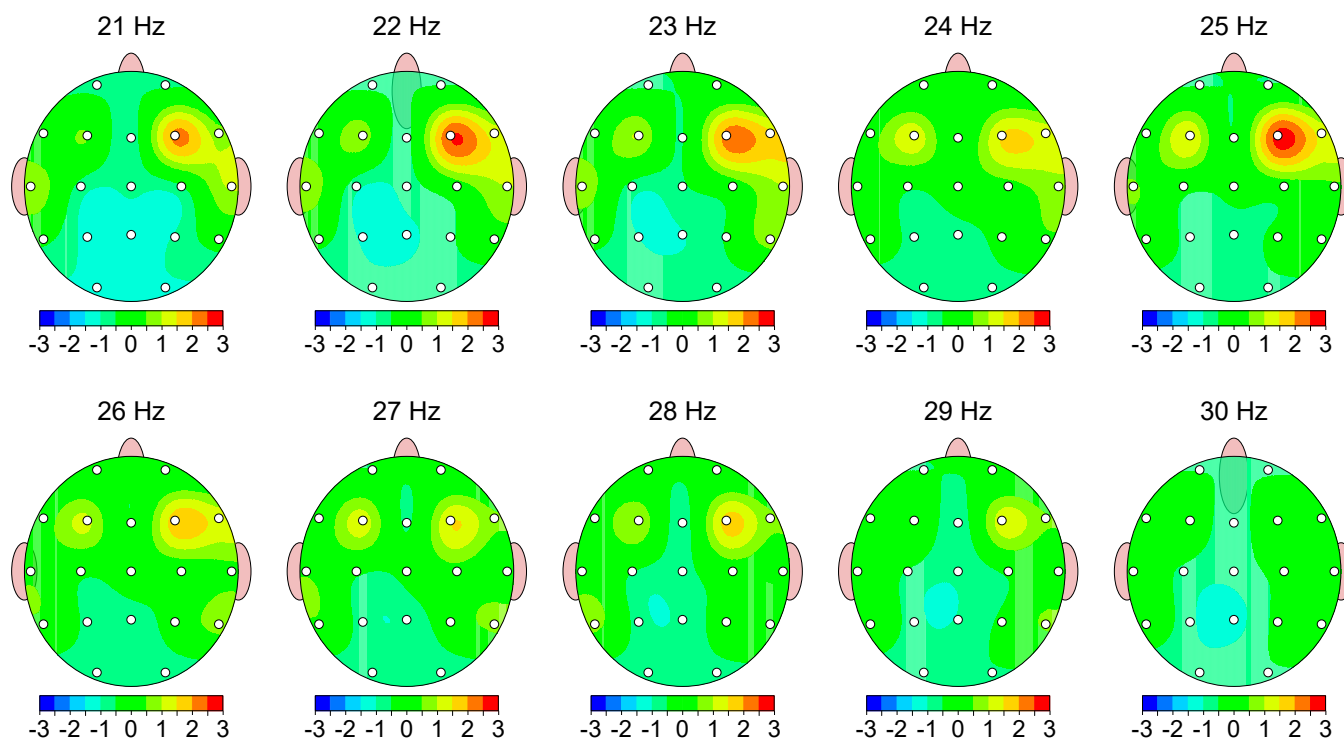
Warning: Absolute power must be consulted to interpret relative power.



Z Scored FFT Absolute Power

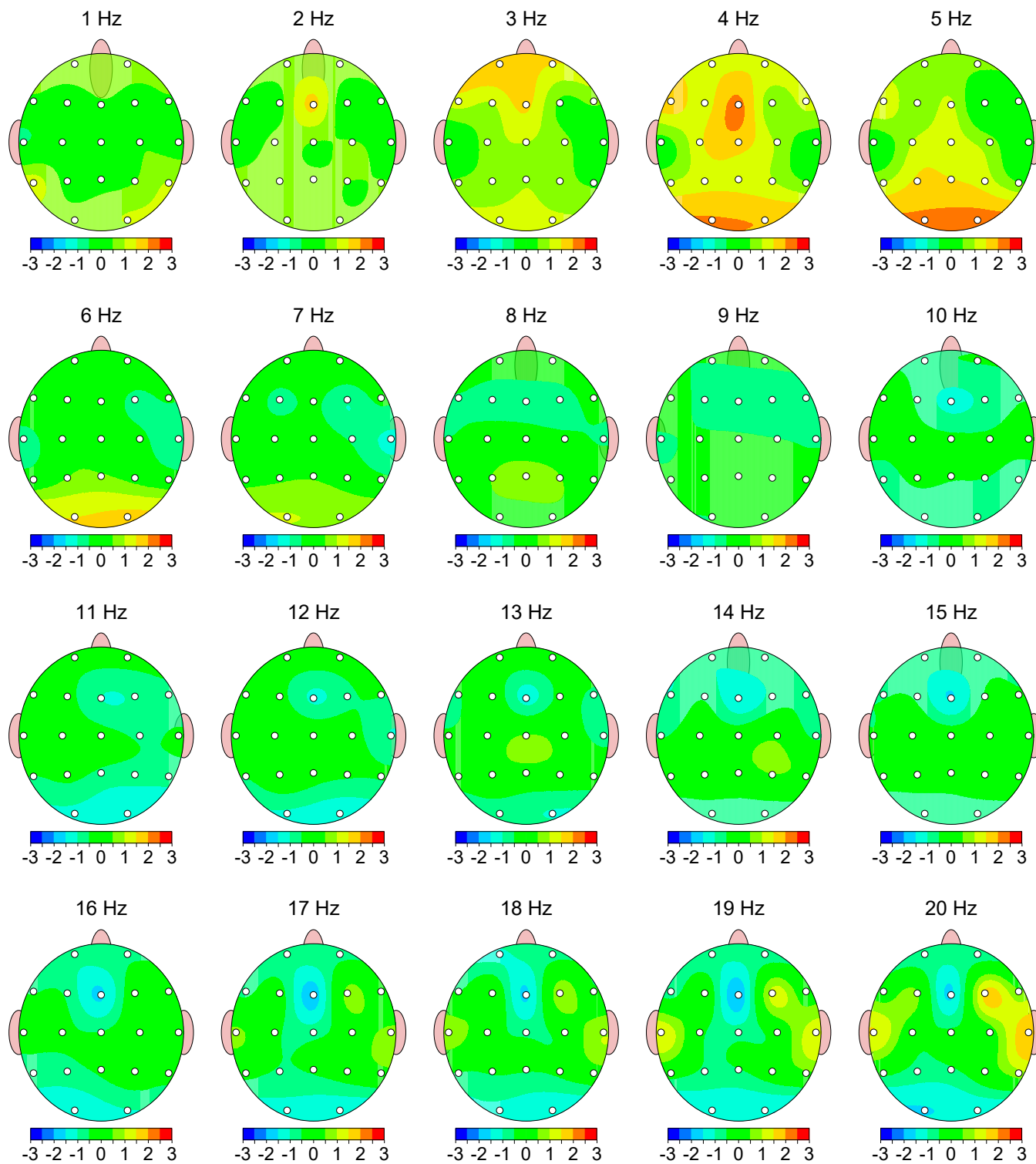


Z Scored FFT Absolute Power



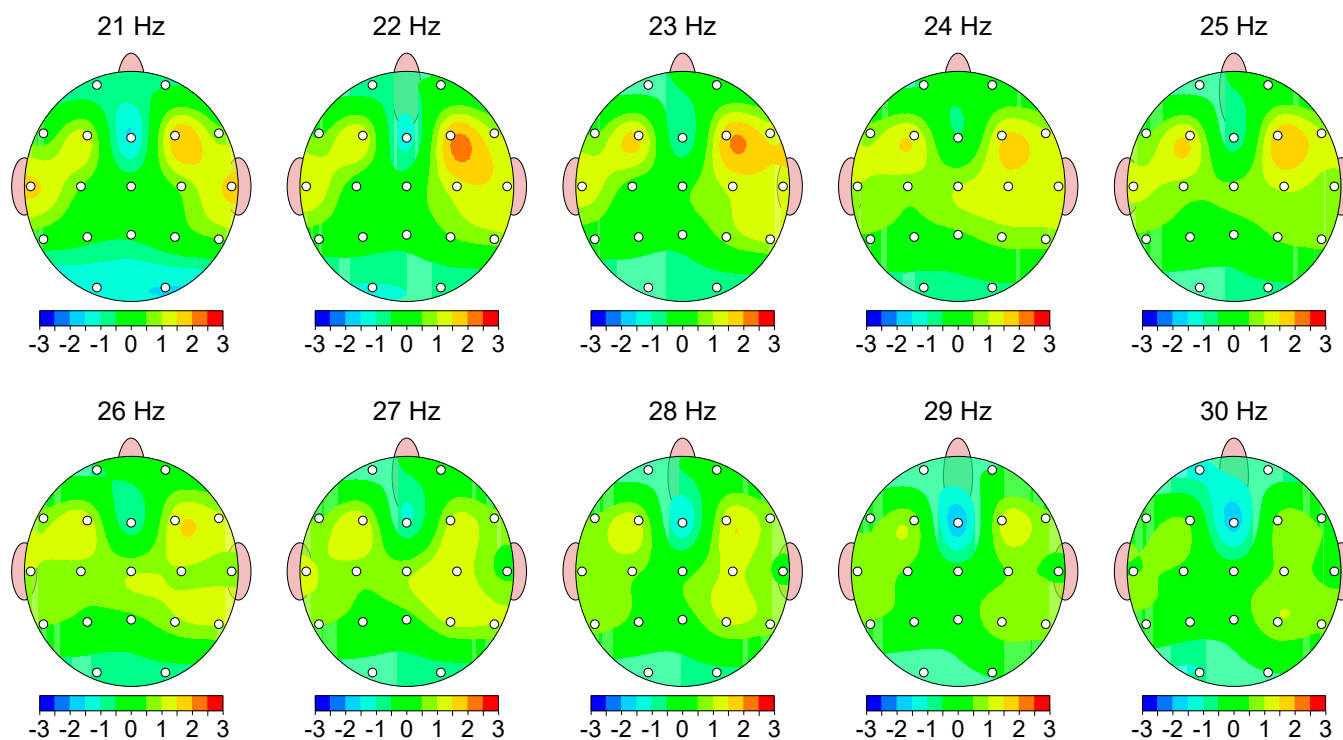
Z Scored FFT Relative Power

Warning: Absolute power must be consulted to interpret relative power.



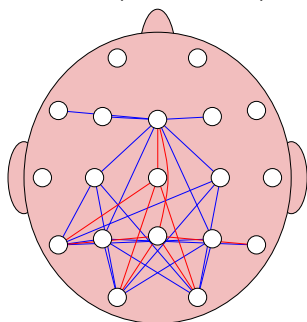
Z Scored FFT Relative Power

Warning: Absolute power must be consulted to interpret relative power.

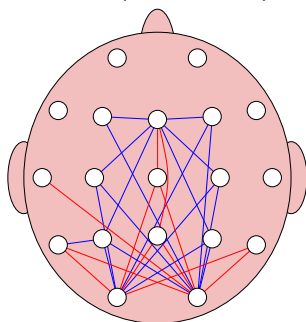


Z Scored FFT Amplitude Asymmetry

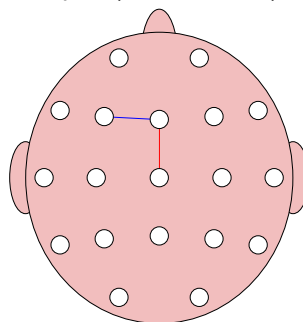
Delta (1.0 - 4.0 Hz)



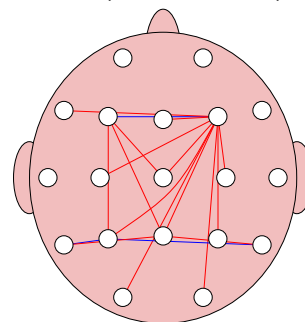
Theta (4.0 - 8.0 Hz)



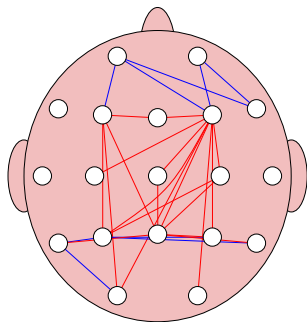
Alpha (8.0 - 12.0 Hz)



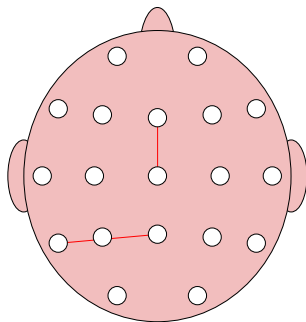
Beta (12.0 - 25.0 Hz)



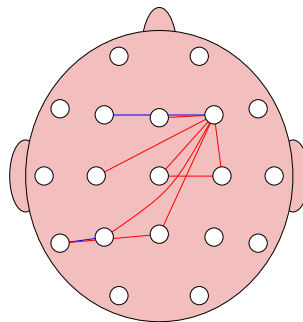
High Beta (25.0 - 30.0 Hz)



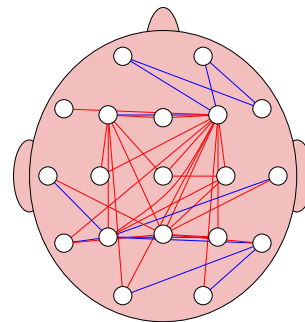
Beta 1 (12.0 - 15.0 Hz)



Beta 2 (15.0 - 18.0 Hz)



Beta 3 (18.0 - 25.0 Hz)

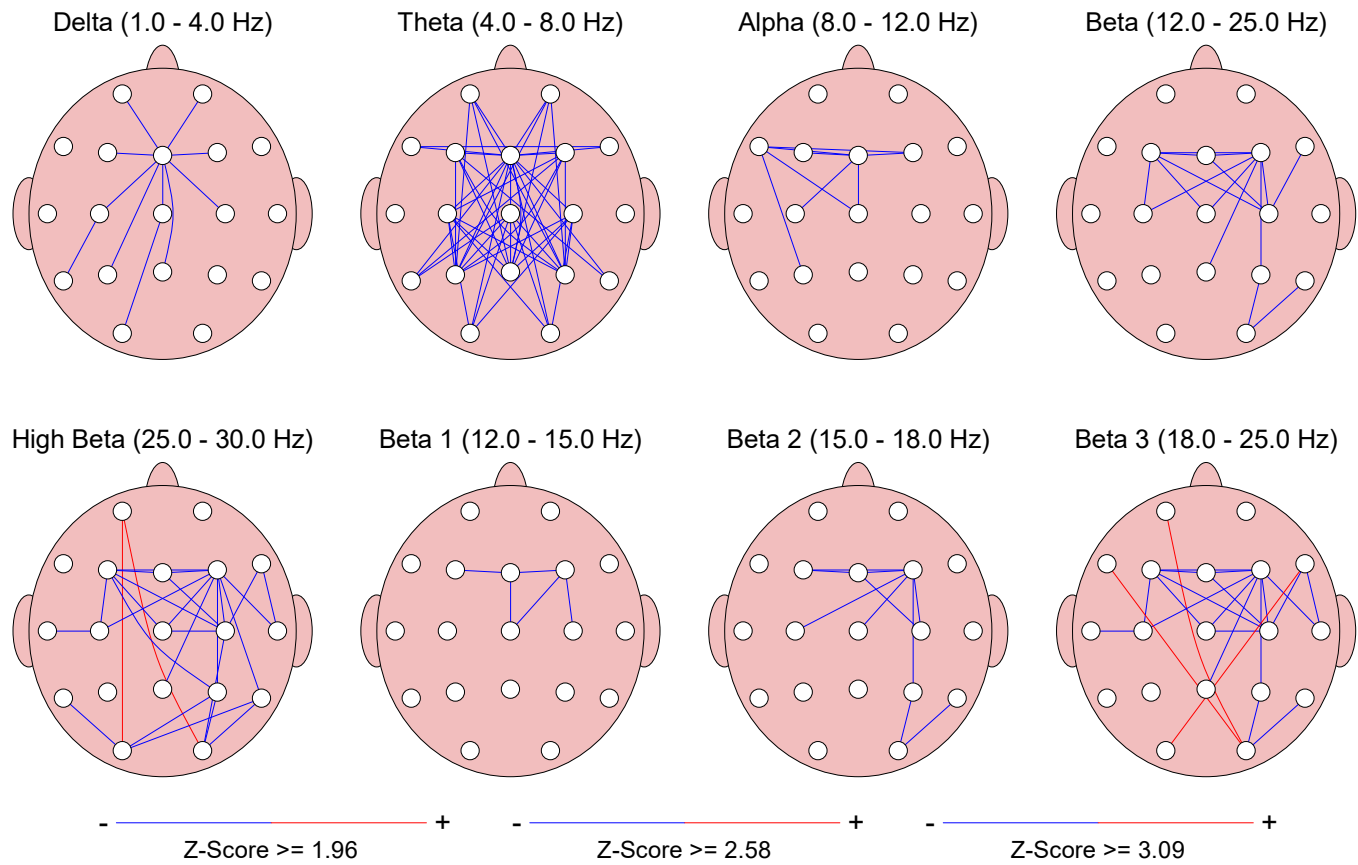


- ———— +
Z-Score ≥ 1.96

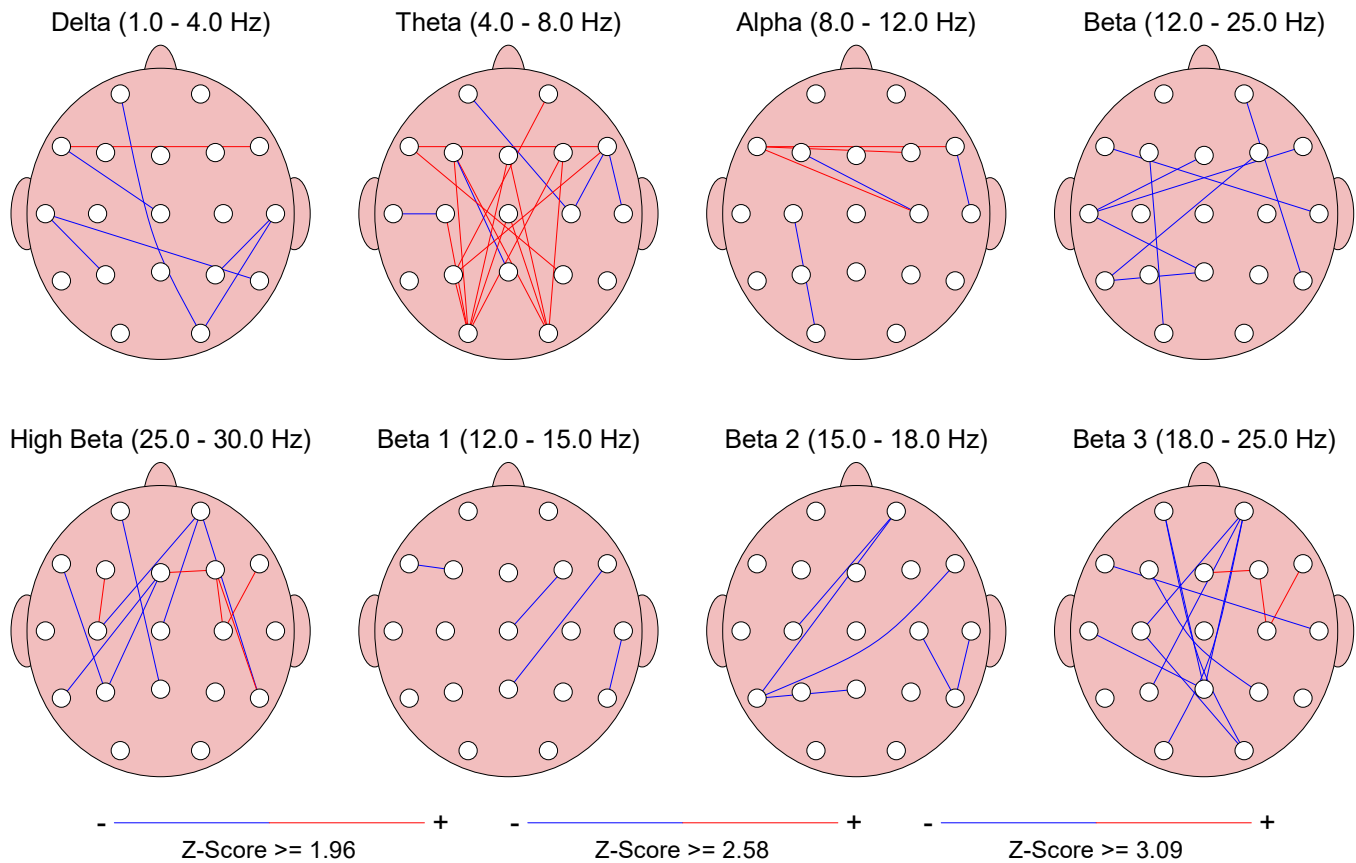
- ———— +
Z-Score ≥ 2.58

- ———— +
Z-Score ≥ 3.09

Z Scored FFT Coherence



Z Scored FFT Phase Lag



FFT Absolute Power (uV Sq)

Intrahemispheric: LEFT

	DELTA	THETA	ALPHA	BETA	HIGH	BETA 1	BETA 2	BETA 3
FP1 - LE	34.35	8.02	3.41	4.07	0.84	1.45	0.94	1.68
F3 - LE	15.93	7.35	3.71	7.87	3.07	1.66	1.29	4.92
C3 - LE	8.50	5.15	3.53	4.74	1.23	1.53	1.02	2.19
P3 - LE	8.56	5.68	4.45	4.05	0.64	1.64	0.89	1.52
O1 - LE	20.01	15.60	7.02	5.08	0.68	2.11	1.20	1.78
F7 - LE	14.30	5.61	3.30	4.30	1.49	1.19	0.89	2.22
T3 - LE	5.81	3.26	3.17	8.24	2.68	1.62	1.38	5.24
T5 - LE	13.26	6.22	4.75	5.60	1.15	2.02	1.31	2.27

Intrahemispheric: RIGHT

	DELTA	THETA	ALPHA	BETA	HIGH	BETA 1	BETA 2	BETA 3
FP2 - LE	32.92	7.68	3.73	4.79	1.23	1.59	1.05	2.15
F4 - LE	17.57	7.17	4.08	11.90	4.16	1.84	1.98	8.08
C4 - LE	9.68	4.85	3.60	5.84	1.57	1.58	1.29	2.98
P4 - LE	9.91	5.41	4.58	4.89	1.03	1.60	1.16	2.14
O2 - LE	20.62	14.91	6.86	4.85	0.71	1.95	1.17	1.73
F8 - LE	18.87	5.90	3.40	6.98	2.58	1.47	1.35	4.17
T4 - LE	7.65	2.74	2.74	8.17	2.08	1.35	1.63	5.19
T6 - LE	10.02	3.59	3.65	5.42	1.36	1.54	1.22	2.66

Intrahemispheric: CENTER

	DELTA	THETA	ALPHA	BETA	HIGH	BETA 1	BETA 2	BETA 3
Fz - LE	36.85	17.31	5.86	5.30	0.87	2.00	1.19	2.12
Cz - LE	10.50	7.54	4.36	4.79	1.11	1.73	1.03	2.03
Pz - LE	8.72	5.79	4.48	3.95	0.59	1.52	0.93	1.50

Z Scored FFT Absolute Power

Intrahemispheric: LEFT

	DELTA	THETA	ALPHA	BETA	HIGH	BETA 1	BETA 2	BETA 3
FP1 - LE	0.33	0.30	-0.61	-0.74	-0.57	-0.59	-0.84	-0.71
F3 - LE	0.04	0.02	-0.65	0.12	0.86	-0.50	-0.66	0.58
C3 - LE	-0.78	-0.68	-0.82	-1.00	-0.26	-0.82	-1.13	-0.88
P3 - LE	-0.73	-0.37	-0.67	-1.21	-0.81	-0.79	-1.21	-1.36
O1 - LE	1.16	2.15	-0.39	-0.84	-0.80	-0.61	-0.82	-0.99
F7 - LE	0.08	0.36	-0.40	-0.42	0.19	-0.70	-0.81	-0.12
T3 - LE	-0.39	-0.25	-0.38	0.46	0.66	-0.41	-0.25	0.90
T5 - LE	1.00	0.33	-0.40	-0.38	0.20	-0.37	-0.49	-0.30

Intrahemispheric: RIGHT

	DELTA	THETA	ALPHA	BETA	HIGH	BETA 1	BETA 2	BETA 3
FP2 - LE	0.31	0.23	-0.52	-0.64	-0.41	-0.50	-0.77	-0.60
F4 - LE	0.23	-0.13	-0.65	0.96	1.44	-0.38	0.16	1.60
C4 - LE	-0.47	-0.84	-0.82	-0.55	0.21	-0.77	-0.72	-0.30
P4 - LE	-0.46	-0.45	-0.65	-0.86	-0.14	-0.81	-0.86	-0.80
O2 - LE	1.28	2.21	-0.40	-0.83	-0.72	-0.63	-0.77	-0.99
F8 - LE	0.42	0.47	-0.36	0.39	1.21	-0.31	-0.07	0.72
T4 - LE	0.12	-0.34	-0.50	0.65	0.41	-0.66	0.14	1.06
T6 - LE	0.38	-0.31	-0.57	-0.27	0.62	-0.58	-0.46	0.02

Intrahemispheric: CENTER

	DELTA	THETA	ALPHA	BETA	HIGH	BETA 1	BETA 2	BETA 3
Fz - LE	1.55	1.32	-0.38	-0.66	-0.57	-0.32	-0.80	-0.73
Cz - LE	-0.92	-0.46	-0.82	-1.04	-0.37	-0.76	-1.15	-0.98
Pz - LE	-0.99	-0.51	-0.77	-1.31	-0.99	-0.95	-1.17	-1.43

FFT Relative Power (%)

Intrahemispheric: LEFT

	DELTA	THETA	ALPHA	BETA	HIGH	BETA 1	BETA 2	BETA 3
FP1 - LE	66.05	15.43	6.55	7.83	1.61	2.78	1.81	3.23
F3 - LE	38.31	17.69	8.92	18.94	7.39	3.99	3.10	11.84
C3 - LE	33.93	20.55	14.10	18.93	4.90	6.09	4.08	8.76
P3 - LE	34.90	23.17	18.12	16.52	2.63	6.67	3.64	6.21
O1 - LE	40.31	31.42	14.13	10.24	1.37	4.25	2.41	3.58
F7 - LE	45.99	18.05	10.62	13.82	4.79	3.82	2.87	7.13
T3 - LE	20.76	11.67	11.34	29.46	9.59	5.79	4.94	18.73
T5 - LE	39.88	18.70	14.30	16.83	3.45	6.08	3.93	6.82

Intrahemispheric: RIGHT

	DELTA	THETA	ALPHA	BETA	HIGH	BETA 1	BETA 2	BETA 3
FP2 - LE	63.09	14.71	7.15	9.17	2.37	3.05	2.01	4.11
F4 - LE	35.12	14.33	8.15	23.79	8.32	3.68	3.96	16.15
C4 - LE	34.90	17.48	12.98	21.04	5.65	5.68	4.64	10.72
P4 - LE	35.66	19.48	16.50	17.62	3.70	5.76	4.16	7.70
O2 - LE	41.69	30.14	13.86	9.80	1.45	3.94	2.36	3.50
F8 - LE	46.01	14.39	8.30	17.02	6.29	3.58	3.28	10.16
T4 - LE	26.64	9.55	9.53	28.44	7.23	4.69	5.67	18.07
T6 - LE	37.15	13.31	13.52	20.11	5.05	5.71	4.53	9.87

Intrahemispheric: CENTER

	DELTA	THETA	ALPHA	BETA	HIGH	BETA 1	BETA 2	BETA 3
Fz - LE	54.69	25.69	8.70	7.87	1.29	2.96	1.76	3.14
Cz - LE	35.66	25.62	14.79	16.27	3.78	5.87	3.51	6.89
Pz - LE	35.48	23.58	18.21	16.09	2.41	6.19	3.78	6.12

Z Scored FFT Relative Power

Intrahemispheric: LEFT

	DELTA	THETA	ALPHA	BETA	HIGH	BETA 1	BETA 2	BETA 3
FP1 - LE	0.92	0.70	-0.48	-0.89	-0.66	-0.45	-0.88	-0.86
F3 - LE	0.30	0.41	-0.71	0.50	1.23	-0.36	-0.52	1.03
C3 - LE	0.45	0.93	-0.34	-0.05	0.72	0.10	-0.25	0.14
P3 - LE	0.57	1.19	-0.24	-0.47	0.20	0.04	-0.47	-0.44
O1 - LE	0.83	2.00	-0.81	-1.46	-0.76	-1.03	-1.13	-1.37
F7 - LE	0.43	1.04	-0.30	-0.25	0.54	-0.50	-0.60	0.11
T3 - LE	-0.31	-0.15	-0.33	0.93	0.94	-0.38	-0.07	1.34
T5 - LE	0.96	0.75	-0.59	-0.44	0.47	-0.39	-0.43	-0.17

Intrahemispheric: RIGHT

	DELTA	THETA	ALPHA	BETA	HIGH	BETA 1	BETA 2	BETA 3
FP2 - LE	0.81	0.65	-0.42	-0.64	-0.30	-0.36	-0.67	-0.59
F4 - LE	0.17	-0.39	-1.00	1.12	1.39	-0.66	0.14	1.67
C4 - LE	0.51	0.30	-0.58	0.35	1.06	-0.05	0.06	0.72
P4 - LE	0.55	0.88	-0.37	-0.04	0.84	-0.13	0.05	0.18
O2 - LE	0.88	1.98	-0.86	-1.52	-0.63	-1.20	-1.09	-1.38
F8 - LE	0.42	0.33	-0.60	0.25	0.94	-0.59	-0.25	0.76
T4 - LE	0.15	-0.50	-0.56	1.01	0.63	-0.92	0.25	1.43
T6 - LE	0.73	0.24	-0.64	0.32	0.90	-0.25	0.15	0.66

Intrahemispheric: CENTER

	DELTA	THETA	ALPHA	BETA	HIGH	BETA 1	BETA 2	BETA 3
Fz - LE	1.11	1.04	-1.13	-1.70	-1.08	-1.32	-1.66	-1.50
Cz - LE	0.40	1.12	-0.41	-0.23	0.62	0.17	-0.46	-0.12
Pz - LE	0.57	1.15	-0.29	-0.41	0.15	0.01	-0.28	-0.40

FFT Power Ratio

Intrahemispheric: LEFT

	D/T	D/A	D/B	D/G	T/A	T/B	T/G	A/B	A/G	B/G
FP1 - LE	4.28	10.08	8.44	41.10	2.36	1.97	9.60	0.84	4.08	4.87
F3 - LE	2.17	4.30	2.02	5.18	1.98	0.93	2.39	0.47	1.21	2.56
C3 - LE	1.65	2.41	1.79	6.93	1.46	1.09	4.20	0.75	2.88	3.86
P3 - LE	1.51	1.93	2.11	13.28	1.28	1.40	8.82	1.10	6.90	6.29
O1 - LE	1.28	2.85	3.94	29.39	2.22	3.07	22.91	1.38	10.30	7.46
F7 - LE	2.55	4.33	3.33	9.61	1.70	1.31	3.77	0.77	2.22	2.89
T3 - LE	1.78	1.83	0.70	2.16	1.03	0.40	1.22	0.38	1.18	3.07
T5 - LE	2.13	2.79	2.37	11.57	1.31	1.11	5.42	0.85	4.15	4.88

Intrahemispheric: RIGHT

	D/T	D/A	D/B	D/G	T/A	T/B	T/G	A/B	A/G	B/G
FP2 - LE	4.29	8.82	6.88	26.67	2.06	1.60	6.22	0.78	3.02	3.88
F4 - LE	2.45	4.31	1.48	4.22	1.76	0.60	1.72	0.34	0.98	2.86
C4 - LE	2.00	2.69	1.66	6.17	1.35	0.83	3.09	0.62	2.29	3.72
P4 - LE	1.83	2.16	2.02	9.63	1.18	1.11	5.26	0.94	4.46	4.76
O2 - LE	1.38	3.01	4.25	28.85	2.17	3.07	20.86	1.41	9.59	6.78
F8 - LE	3.20	5.54	2.70	7.32	1.73	0.85	2.29	0.49	1.32	2.71
T4 - LE	2.79	2.79	0.94	3.68	1.00	0.34	1.32	0.34	1.32	3.93
T6 - LE	2.79	2.75	1.85	7.36	0.98	0.66	2.64	0.67	2.68	3.99

Intrahemispheric: CENTER

	D/T	D/A	D/B	D/G	T/A	T/B	T/G	A/B	A/G	B/G
Fz - LE	2.13	6.29	6.95	42.34	2.95	3.26	19.89	1.11	6.74	6.09
Cz - LE	1.39	2.41	2.19	9.44	1.73	1.57	6.78	0.91	3.91	4.31
Pz - LE	1.50	1.95	2.20	14.73	1.29	1.47	9.79	1.13	7.56	6.68

Z Scored FFT Power Ratio

Intrahemispheric: LEFT

	D/T	D/A	D/B	D/G	T/A	T/B	T/G	A/B	A/G	B/G
FP1 - LE	0.22	0.69	1.02	0.98	1.02	1.12	0.80	0.11	0.12	0.10
F3 - LE	0.02	0.55	-0.07	-0.88	0.88	-0.12	-0.89	-0.88	-1.16	-1.23
C3 - LE	-0.10	0.40	0.35	-0.34	0.63	0.58	-0.29	-0.26	-0.60	-0.85
P3 - LE	-0.21	0.41	0.76	0.34	0.65	1.14	0.44	0.00	-0.24	-0.52
O1 - LE	-0.67	0.85	1.74	1.73	1.34	2.71	2.09	0.06	-0.05	-0.23
F7 - LE	-0.24	0.36	0.39	-0.27	0.81	0.83	-0.10	-0.13	-0.50	-0.94
T3 - LE	-0.20	0.08	-0.66	-0.86	0.27	-0.62	-0.76	-0.66	-0.76	-0.74
T5 - LE	0.54	0.79	1.16	0.33	0.74	0.81	-0.06	-0.26	-0.59	-0.85

Intrahemispheric: RIGHT

	D/T	D/A	D/B	D/G	T/A	T/B	T/G	A/B	A/G	B/G
FP2 - LE	0.26	0.61	0.82	0.68	0.85	0.95	0.50	0.02	-0.08	-0.24
F4 - LE	0.35	0.67	-0.52	-1.11	0.73	-1.11	-1.40	-1.46	-1.47	-0.99
C4 - LE	0.37	0.57	0.20	-0.60	0.56	-0.06	-0.86	-0.66	-0.95	-0.99
P4 - LE	0.05	0.47	0.50	-0.35	0.60	0.62	-0.35	-0.27	-0.66	-1.04
O2 - LE	-0.58	0.90	2.01	1.80	1.37	3.02	2.01	0.02	-0.12	-0.36
F8 - LE	0.13	0.56	0.08	-0.60	0.80	-0.01	-0.63	-0.67	-0.92	-1.10
T4 - LE	0.51	0.47	-0.38	-0.42	0.32	-0.87	-0.63	-0.87	-0.67	-0.30
T6 - LE	0.86	0.72	0.54	-0.19	0.55	-0.06	-0.68	-0.60	-0.86	-1.03

Intrahemispheric: CENTER

	D/T	D/A	D/B	D/G	T/A	T/B	T/G	A/B	A/G	B/G
Fz - LE	0.34	1.18	1.69	1.66	1.44	1.97	1.43	0.03	0.01	-0.02
Cz - LE	-0.31	0.43	0.42	-0.27	0.76	0.78	-0.06	-0.21	-0.59	-0.88
Pz - LE	-0.23	0.43	0.75	0.47	0.68	1.08	0.56	-0.05	-0.24	-0.45

Peak Frequency (Hz)

Intrahemispheric: LEFT

	DELTA	THETA	ALPHA	BETA	HIGH	BETA 1	BETA 2	BETA 3
FP1 - LE	1.78	5.39	9.58	17.12	27.03	13.05	16.21	21.15
F3 - LE	2.04	5.36	9.67	18.96	26.91	13.11	16.30	21.63
C3 - LE	2.15	5.44	9.77	17.44	26.96	13.02	16.20	21.09
P3 - LE	2.15	5.50	9.63	16.69	27.06	13.06	16.15	20.92
O1 - LE	2.10	5.40	9.48	16.52	27.10	13.09	16.16	20.82
F7 - LE	1.92	5.31	9.76	18.08	27.06	13.03	16.20	21.54
T3 - LE	2.11	5.47	9.97	18.85	26.96	13.12	16.34	21.28
T5 - LE	1.96	5.51	9.70	17.01	27.12	13.12	16.19	20.95

Intrahemispheric: RIGHT

	DELTA	THETA	ALPHA	BETA	HIGH	BETA 1	BETA 2	BETA 3
FP2 - LE	1.78	5.42	9.56	17.45	27.05	13.09	16.23	21.27
F4 - LE	1.97	5.42	9.56	19.32	26.85	13.11	16.42	21.44
C4 - LE	2.09	5.45	9.67	18.04	26.99	13.16	16.26	21.40
P4 - LE	2.08	5.50	9.53	17.36	27.09	13.16	16.19	21.13
O2 - LE	2.02	5.40	9.43	16.62	27.12	13.11	16.14	20.90
F8 - LE	1.89	5.30	9.61	18.82	26.89	13.13	16.27	21.65
T4 - LE	1.98	5.39	9.81	18.92	26.95	13.23	16.34	21.21
T6 - LE	1.89	5.55	9.65	17.77	27.06	13.16	16.22	21.14

Intrahemispheric: CENTER

	DELTA	THETA	ALPHA	BETA	HIGH	BETA 1	BETA 2	BETA 3
Fz - LE	2.14	5.30	9.49	16.98	26.90	13.07	16.17	21.13
Cz - LE	2.26	5.39	9.61	17.23	26.90	13.06	16.17	21.31
Pz - LE	2.20	5.51	9.53	16.80	27.04	13.08	16.18	20.95

Z Scored Peak Frequency

Intrahemispheric: LEFT

	DELTA	THETA	ALPHA	BETA	HIGH	BETA 1	BETA 2	BETA 3
FP1 - LE	-0.05	-0.80	-0.23	-0.46	-0.61	-0.91	-0.43	0.33
F3 - LE	0.46	-1.42	0.23	1.66	-0.93	-0.11	0.55	1.54
C3 - LE	0.60	-1.12	0.09	0.23	-0.66	-0.34	-0.72	0.64
P3 - LE	0.67	-0.89	-0.66	-0.21	-0.08	0.15	-0.99	0.52
O1 - LE	0.27	-1.44	-1.29	-0.12	-0.06	0.36	-0.39	0.26
F7 - LE	0.26	-1.42	0.41	0.83	-0.57	-1.15	-0.40	1.60
T3 - LE	0.55	-0.76	0.75	1.47	-1.12	-0.32	1.47	0.80
T5 - LE	-0.97	-0.87	-0.45	0.33	0.26	0.32	-0.26	0.65

Intrahemispheric: RIGHT

	DELTA	THETA	ALPHA	BETA	HIGH	BETA 1	BETA 2	BETA 3
FP2 - LE	-0.13	-0.71	-0.36	-0.18	-0.25	-0.46	-0.13	0.62
F4 - LE	-0.08	-1.19	-0.23	2.18	-1.28	-0.00	1.91	1.16
C4 - LE	0.16	-1.12	-0.26	1.02	-0.38	0.48	-0.15	1.51
P4 - LE	0.21	-0.78	-0.99	0.50	0.48	0.76	-0.55	1.02
O2 - LE	-0.26	-1.38	-1.47	-0.08	0.25	0.50	-0.69	0.44
F8 - LE	-0.03	-1.23	-0.25	1.47	-1.13	-0.16	0.33	1.81
T4 - LE	-0.17	-1.17	0.12	1.55	-1.74	0.53	1.16	0.73
T6 - LE	-1.36	-0.69	-0.69	1.07	-0.23	0.73	-0.10	0.97

Intrahemispheric: CENTER

	DELTA	THETA	ALPHA	BETA	HIGH	BETA 1	BETA 2	BETA 3
Fz - LE	0.77	-1.73	-0.45	-0.29	-0.88	-0.19	-0.85	0.66
Cz - LE	1.37	-1.36	-0.28	0.12	-0.74	-0.10	-1.03	1.21
Pz - LE	1.05	-0.81	-0.95	-0.13	0.04	0.25	-0.67	0.59

FFT Amplitude Asymmetry

Intrahemispheric: LEFT

	DELTA	THETA	ALPHA	BETA
FP1 F3	73.29	8.68	-8.42	-63.64
FP1 C3	120.62	43.59	-3.67	-15.25
FP1 P3	120.20	34.12	-26.47	0.44
FP1 O1	52.75	-64.15	-69.26	-22.12
FP1 F7	82.41	35.33	3.03	-5.41
FP1 T3	142.15	84.35	7.11	-67.73
FP1 T5	88.60	25.36	-33.02	-31.55
F3 C3	60.76	35.24	4.76	49.59
F3 P3	60.16	25.62	-18.14	64.04
F3 O1	-22.74	-71.83	-61.74	43.04
F3 F7	10.74	26.85	11.45	58.74
F3 T3	93.11	77.08	15.51	-4.58
F3 T5	18.28	16.77	-24.77	33.79
C3 P3	-0.66	-9.84	-22.85	15.70
C3 O1	-80.71	-100.70	-66.01	-6.92
C3 F7	-50.85	-8.59	6.70	9.87
C3 T3	37.68	44.89	10.77	-53.87
C3 T5	-43.70	-18.75	-29.44	-16.49
P3 O1	-80.16	-93.17	-44.85	-22.55
P3 F7	-50.23	1.25	29.44	-5.85
P3 T3	38.31	54.13	33.42	-68.13
P3 T5	-43.06	-8.95	-6.70	-31.98
O1 F7	33.28	94.14	71.91	16.76
O1 T3	110.03	130.81	75.44	-47.39
O1 T5	40.60	86.01	38.44	-9.60
F7 T3	84.48	52.97	4.08	-62.90
F7 T5	7.58	-10.20	-35.96	-26.25
T3 T5	-78.15	-62.32	-39.89	38.23

Intrahemispheric: RIGHT

	DELTA	THETA	ALPHA	BETA
FP2 F4	60.78	6.78	-8.80	-85.28
FP2 C4	109.07	45.13	3.61	-19.77
FP2 P4	107.47	34.57	-20.49	-2.22
FP2 O2	45.92	-64.06	-59.00	-1.30
FP2 F8	54.27	26.16	9.25	-37.25
FP2 T4	124.54	94.72	30.71	-52.20
FP2 T6	106.67	72.56	2.33	-12.46
F4 C4	57.89	38.65	12.40	68.39
F4 P4	55.80	27.96	-11.75	83.45
F4 O2	-15.97	-70.08	-50.86	84.21
F4 F8	-7.09	19.47	18.01	52.17
F4 T4	78.64	89.38	39.25	37.22
F4 T6	54.77	66.60	11.12	74.80
C4 P4	-2.27	-10.99	-24.06	17.57
C4 O2	-72.19	-101.83	-62.28	18.48
C4 F8	-64.32	-19.55	5.65	-17.81
C4 T4	23.42	55.52	27.18	-33.29
C4 T6	-3.39	29.88	-1.28	7.35
P4 O2	-70.21	-93.46	-39.70	0.91
P4 F8	-62.28	-8.60	29.61	-35.11
P4 T4	25.65	65.51	50.41	-50.13
P4 T6	-1.12	40.53	22.79	-10.25
O2 F8	8.91	86.60	67.33	-35.99
O2 T4	91.74	137.87	85.82	-50.99
O2 T6	69.23	122.40	61.11	-11.16
F8 T4	84.56	73.09	21.61	-15.72
F8 T6	61.26	48.71	-6.93	25.08
T4 T6	-26.76	-26.75	-28.44	40.40

Interhemispheric: HOMOLOGOUS PAIRS

	DELTA	THETA	ALPHA	BETA
FP1 FP2	4.26	4.41	-9.14	-16.16
C3 C4	-12.97	6.03	-1.86	-20.67
O1 O2	-3.01	4.51	2.30	4.71
T3 T4	-27.42	17.35	14.68	0.88

	DELTA	THETA	ALPHA	BETA
F3 F4	-9.83	2.50	-9.51	-40.78
P3 P4	-14.57	4.88	-3.09	-18.80
F7 F8	-27.51	-4.97	-2.92	-47.55
T5 T6	27.85	53.60	26.35	3.14

Z Scored FFT Amplitude Asymmetry

Intrahemispheric: LEFT

	DELTA	THETA	ALPHA	BETA
FP1 F3	0.60	0.46	0.14	-1.18
FP1 C3	1.03	1.08	0.46	-0.03
FP1 P3	0.94	0.77	0.32	0.24
FP1 O1	-0.08	-1.17	-0.16	-0.09
FP1 F7	0.61	0.05	-0.73	-0.77
FP1 T3	0.87	0.69	-0.46	-1.32
FP1 T5	0.12	0.07	-0.19	-0.55
F3 C3	0.83	1.53	0.58	1.79
F3 P3	0.65	0.63	0.34	2.17
F3 O1	-0.90	-1.90	-0.23	1.46
F3 F7	-0.09	-0.62	-0.97	0.95
F3 T3	0.58	0.36	-0.70	-0.39
F3 T5	-0.81	-0.44	-0.32	0.79
C3 P3	-0.17	-0.40	-0.01	0.76
C3 O1	-2.30	-2.95	-0.63	-0.08
C3 F7	-0.89	-1.57	-1.03	-0.80
C3 T3	-0.27	-0.41	-1.09	-1.58
C3 T5	-2.76	-1.55	-0.90	-1.27
P3 O1	-4.41	-3.63	-0.89	-0.86
P3 F7	-0.68	-0.97	-0.67	-1.12
P3 T3	-0.13	-0.14	-0.74	-1.74
P3 T5	-3.48	-2.08	-1.52	-3.54
O1 F7	0.89	1.54	-0.13	-0.61
O1 T3	1.42	1.86	-0.14	-1.38
O1 T5	0.49	2.09	-0.14	-1.52
F7 T3	0.68	0.85	-0.05	-1.00
F7 T5	-0.68	-0.01	0.15	-0.01
T3 T5	-1.72	-0.87	0.18	0.93

Intrahemispheric: RIGHT

	DELTA	THETA	ALPHA	BETA
FP2 F4	0.39	0.55	0.36	-1.79
FP2 C4	0.84	1.16	0.71	-0.15
FP2 P4	0.78	0.77	0.45	0.18
FP2 O2	-0.22	-1.36	0.01	0.18
FP2 F8	0.12	-0.27	-0.72	-1.65
FP2 T4	0.54	0.76	-0.16	-1.20
FP2 T6	0.37	0.71	0.36	-0.38
F4 C4	1.02	1.58	0.83	2.89
F4 P4	0.72	0.53	0.40	2.60
F4 O2	-0.98	-2.30	-0.11	2.18
F4 F8	-0.37	-1.03	-1.10	0.66
F4 T4	0.23	0.35	-0.54	0.30
F4 T6	-0.08	0.38	0.25	1.48
C4 P4	0.05	-0.46	-0.04	0.88
C4 O2	-2.52	-4.98	-0.52	0.53
C4 F8	-1.00	-1.84	-1.24	-1.04
C4 T4	-0.60	-0.60	-1.15	-1.16
C4 T6	-1.40	-0.47	-0.21	-0.44
P4 O2	-2.65	-4.91	-0.70	-0.01
P4 F8	-0.82	-1.06	-0.77	-1.27
P4 T4	-0.56	-0.13	-0.64	-1.49
P4 T6	-1.51	-0.19	-0.30	-1.74
O2 F8	0.55	1.40	-0.23	-1.21
O2 T4	1.07	1.92	-0.05	-1.42
O2 T6	1.57	4.61	0.56	-1.71
F8 T4	0.56	1.19	0.23	-0.17
F8 T6	0.22	0.98	0.66	0.67
T4 T6	-0.34	0.06	0.47	0.91

Interhemispheric: HOMOLOGOUS PAIRS

	DELTA	THETA	ALPHA	BETA
FP1 FP2	0.16	0.46	-0.83	-0.57
C3 C4	-0.75	0.36	0.02	-0.86
O1 O2	-0.34	-0.17	0.17	0.03
T3 T4	-0.63	0.09	0.16	-0.11

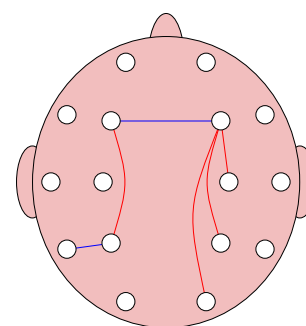
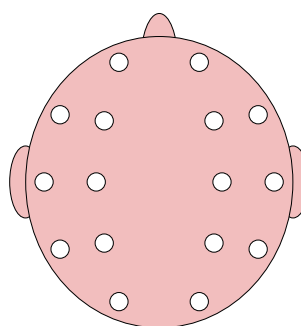
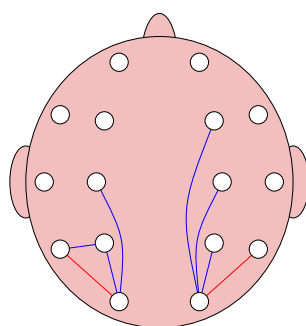
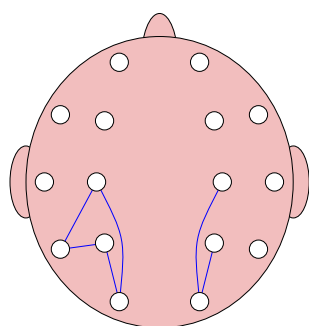
	DELTA	THETA	ALPHA	BETA
F3 F4	-0.48	0.44	-0.26	-2.26
P3 P4	-0.91	0.29	-0.01	-1.55
F7 F8	-0.55	-0.15	-0.14	-1.13
T5 T6	0.77	1.13	0.69	-0.18

Delta (1.0 - 4.0 Hz)

Theta (4.0 - 8.0 Hz)

Alpha (8.0 - 12.0 Hz)

Beta (12.0 - 25.0 Hz)



- ———— +
Z-Score >= 1.96

- ———— +
Z-Score >= 2.58

- ———— +
Z-Score >= 3.09

FFT Coherence

Intrahemispheric: LEFT

	DELTA	THETA	ALPHA	BETA
FP1 F3	48.24	55.41	58.97	26.55
FP1 C3	23.91	29.14	20.22	23.39
FP1 P3	8.16	0.91	0.99	9.46
FP1 O1	1.16	5.03	1.24	1.76
FP1 F7	37.76	45.78	31.77	33.17
FP1 T3	14.65	19.28	3.70	4.92
FP1 T5	3.74	1.10	0.73	3.29
F3 C3	43.71	54.77	52.07	26.33
F3 P3	18.90	6.70	12.13	15.05
F3 O1	3.64	1.93	1.70	4.82
F3 F7	50.53	51.67	38.23	25.58
F3 T3	34.34	33.31	15.53	6.62
F3 T5	9.59	2.93	3.65	6.01
C3 P3	51.65	39.32	59.15	65.91
C3 O1	14.80	3.31	21.44	23.85
C3 F7	33.75	37.76	17.39	17.89
C3 T3	48.31	51.64	28.20	7.39
C3 T5	27.58	24.02	33.80	34.11
P3 O1	55.19	65.20	72.44	65.37
P3 F7	11.93	3.05	0.49	14.11
P3 T3	38.91	32.27	20.46	21.12
P3 T5	58.49	73.55	73.09	67.67
O1 F7	2.51	2.74	0.67	5.72
O1 T3	13.55	6.31	9.57	13.37
O1 T5	66.03	60.79	65.22	46.59
F7 T3	53.82	54.45	45.36	17.86
F7 T5	8.23	3.19	1.66	10.64
T3 T5	31.85	39.81	38.72	33.32

Intrahemispheric: RIGHT

	DELTA	THETA	ALPHA	BETA
FP2 F4	43.09	52.44	64.22	12.95
FP2 C4	19.97	25.02	26.39	11.91
FP2 P4	7.91	0.40	2.43	5.77
FP2 O2	0.78	7.02	0.93	0.65
FP2 F8	24.94	35.80	45.97	27.20
FP2 T4	13.47	18.74	16.48	5.69
FP2 T6	3.40	0.88	0.29	1.09
F4 C4	50.38	61.61	52.71	4.79
F4 P4	26.83	9.17	12.23	5.82
F4 O2	9.29	1.29	1.25	3.24
F4 F8	48.70	56.62	61.16	28.35
F4 T4	30.34	41.82	33.30	2.98
F4 T6	21.71	5.11	5.59	1.49
C4 P4	67.68	45.48	61.04	67.56
C4 O2	31.35	3.90	20.84	11.48
C4 F8	41.41	36.37	35.11	4.13
C4 T4	45.85	54.70	53.64	17.23
C4 T6	52.64	27.29	38.57	29.29
P4 O2	64.95	63.67	69.88	38.48
P4 F8	25.47	3.24	7.01	4.44
P4 T4	32.90	28.13	35.94	24.45
P4 T6	73.77	71.43	72.96	60.22
O2 F8	11.15	2.62	0.11	1.95
O2 T4	10.26	3.48	10.92	3.89
O2 T6	65.63	58.76	58.79	23.59
F8 T4	52.18	55.92	52.94	5.45
F8 T6	34.85	4.42	9.47	2.15
T4 T6	33.91	34.03	49.38	32.83

Interhemispheric: HOMOLOGOUS PAIRS

	DELTA	THETA	ALPHA	BETA
FP1 FP2	85.42	80.13	77.45	66.11
C3 C4	45.02	45.57	35.64	28.06
O1 O2	80.50	89.84	83.96	77.64
T3 T4	4.51	0.69	9.45	0.87

	DELTA	THETA	ALPHA	BETA
F3 F4	32.80	41.97	42.05	10.98
P3 P4	66.88	68.74	59.87	49.14
F7 F8	0.27	0.09	3.10	5.57
T5 T6	56.10	39.94	16.92	12.55

Z Scored FFT Coherence

Intrahemispheric: LEFT

	DELTA	THETA	ALPHA	BETA
FP1 F3	-0.35	-0.84	-1.03	-1.09
FP1 C3	-0.31	-0.50	-1.13	0.04
FP1 P3	-0.45	-2.67	-1.85	0.28
FP1 O1	-0.81	0.50	-0.79	0.21
FP1 F7	-0.87	-0.87	-1.95	-0.85
FP1 T3	-0.26	0.21	-1.47	-0.48
FP1 T5	-0.62	-1.39	-1.27	0.29
F3 C3	-0.81	-1.18	-0.96	-2.08
F3 P3	-1.14	-2.91	-1.18	-0.95
F3 O1	-1.23	-1.75	-1.30	-0.21
F3 F7	0.05	-0.34	-1.96	-0.93
F3 T3	0.01	-0.05	-1.29	-1.25
F3 T5	-1.33	-1.85	-1.38	-0.71
C3 P3	-1.00	-2.22	-0.55	0.22
C3 O1	-1.78	-2.72	-0.32	-0.09
C3 F7	0.22	0.16	-1.83	-0.67
C3 T3	0.21	0.38	-0.89	-1.60
C3 T5	-2.04	-1.51	-0.40	-0.24
P3 O1	-0.61	-0.05	0.34	0.04
P3 F7	-0.06	-1.68	-2.21	0.44
P3 T3	0.24	-0.25	-0.94	-0.28
P3 T5	-0.66	0.11	0.18	0.08
O1 F7	-0.39	-0.38	-1.12	0.93
O1 T3	-0.46	-1.21	-0.48	0.16
O1 T5	0.31	-0.28	-0.02	-1.52
F7 T3	0.92	0.88	0.35	-0.49
F7 T5	-0.44	-1.06	-1.59	0.41
T3 T5	-0.39	-0.21	-0.14	-0.02

Intrahemispheric: RIGHT

	DELTA	THETA	ALPHA	BETA
FP2 F4	-0.56	-1.13	-0.33	-1.39
FP2 C4	-0.54	-1.01	-0.66	-0.75
FP2 P4	-0.28	-3.37	-1.53	-0.23
FP2 O2	-0.85	1.16	-1.02	-0.34
FP2 F8	-1.05	-1.31	-0.83	-0.99
FP2 T4	-0.54	-0.30	-0.16	-0.44
FP2 T6	-0.65	-1.56	-1.45	-0.32
F4 C4	-0.70	-0.89	-1.12	-10.57
F4 P4	-0.49	-2.44	-1.34	-3.15
F4 O2	-0.39	-1.77	-1.50	-0.42
F4 F8	0.21	0.36	0.05	-0.76
F4 T4	-0.49	0.18	0.09	-1.89
F4 T6	-0.11	-1.71	-0.86	-1.59
C4 P4	-0.05	-2.26	-0.94	0.10
C4 O2	-0.41	-2.92	-0.28	-1.20
C4 F8	0.88	0.28	-0.24	-2.47
C4 T4	-0.13	0.22	0.28	-0.81
C4 T6	0.00	-1.19	0.14	-0.20
P4 O2	0.14	0.05	0.39	-2.27
P4 F8	1.16	-1.59	-0.88	-1.04
P4 T4	-0.14	-0.79	0.12	0.14
P4 T6	0.42	0.28	0.47	0.09
O2 F8	1.06	-0.17	-1.28	0.30
O2 T4	-0.64	-1.52	-0.11	-0.77
O2 T6	0.13	-0.62	-0.48	-3.43
F8 T4	0.89	0.99	0.76	-1.58
F8 T6	1.92	-0.97	0.03	-0.80
T4 T6	-0.21	-0.40	0.59	0.26

Interhemispheric: HOMOLOGOUS PAIRS

	DELTA	THETA	ALPHA	BETA
FP1 FP2	0.60	0.64	0.12	0.57
C3 C4	-1.46	-1.40	-0.79	-0.59
O1 O2	0.54	1.51	1.01	1.23
T3 T4	-0.53	-1.09	0.73	-0.51

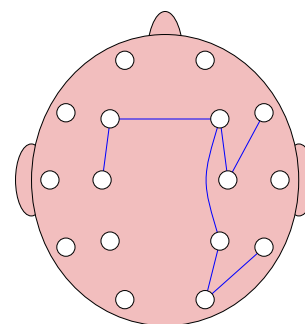
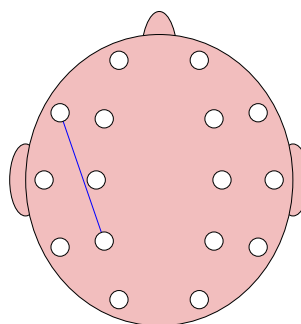
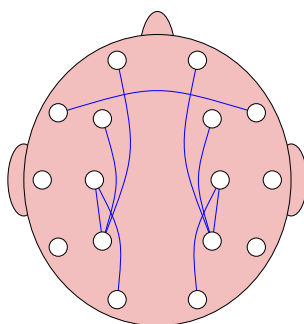
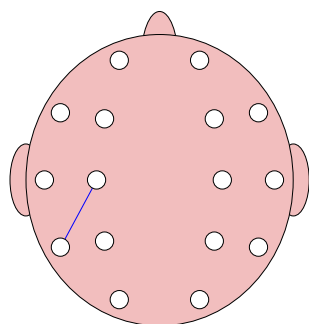
	DELTA	THETA	ALPHA	BETA
F3 F4	-1.23	-1.92	-1.92	-5.06
P3 P4	-0.08	0.24	0.15	0.03
F7 F8	-1.66	-1.99	-0.77	-0.15
T5 T6	0.89	0.85	0.24	0.56

Delta (1.0 - 4.0 Hz)

Theta (4.0 - 8.0 Hz)

Alpha (8.0 - 12.0 Hz)

Beta (12.0 - 25.0 Hz)



- ———— +
Z-Score >= 1.96

- ———— +
Z-Score >= 2.58

- ———— +
Z-Score >= 3.09

FFT Phase Lag (Deg)

Intrahemispheric: LEFT

	DELTA	THETA	ALPHA	BETA
FP1 F3	2.08	2.77	-3.72	-0.22
FP1 C3	6.30	5.93	-12.01	-2.80
FP1 P3	2.73	27.42	-49.69	-7.60
FP1 O1	-23.64	-176.55	-159.35	-13.77
FP1 F7	-1.62	2.32	-3.55	-0.40
FP1 T3	-4.06	12.28	-22.68	-4.72
FP1 T5	-6.50	79.75	-134.18	-19.19
F3 C3	-4.58	1.32	-5.67	-0.06
F3 P3	-7.78	9.71	-17.68	-1.28
F3 O1	-47.06	167.76	-30.01	-1.32
F3 F7	-0.45	-2.02	-6.63	1.56
F3 T3	-3.27	4.14	-17.37	5.15
F3 T5	-24.96	30.09	-30.73	-4.32
C3 P3	0.31	5.46	-3.05	-2.38
C3 O1	-3.78	27.40	-0.09	-0.89
C3 F7	3.14	-4.24	-7.61	7.05
C3 T3	3.69	-0.14	-10.43	-9.31
C3 T5	-2.58	11.66	-6.03	-5.82
P3 O1	-0.93	6.87	3.06	0.47
P3 F7	7.95	-14.03	7.79	7.72
P3 T3	0.56	-8.97	-3.75	-0.06
P3 T5	-2.64	-0.87	-2.28	-0.26
O1 F7	56.14	179.97	164.77	13.19
O1 T3	6.82	-24.76	-4.36	8.07
O1 T5	0.54	-9.07	-4.71	1.82
F7 T3	-3.90	5.80	3.94	5.15
F7 T5	-24.15	26.98	-12.24	-7.68
T3 T5	-3.26	10.58	-0.93	-0.53

Intrahemispheric: RIGHT

	DELTA	THETA	ALPHA	BETA
FP2 F4	4.60	2.57	-2.35	-1.15
FP2 C4	12.28	3.36	-10.20	-1.77
FP2 P4	9.56	10.48	-36.47	-4.31
FP2 O2	27.19	-179.41	-145.12	-18.58
FP2 F8	6.73	-0.69	0.83	-0.68
FP2 T4	13.82	2.62	-1.78	-3.66
FP2 T6	18.16	107.51	-19.98	-0.82
F4 C4	-2.69	-2.34	-5.87	-5.22
F4 P4	-6.26	-5.25	-18.12	-1.63
F4 O2	-23.65	-171.91	-42.36	-2.87
F4 F8	0.88	-1.11	2.13	-2.29
F4 T4	1.71	-4.75	-3.92	-8.75
F4 T6	-3.28	11.22	-15.44	-5.01
C4 P4	-0.76	0.63	-7.15	-1.63
C4 O2	-8.41	5.26	-11.54	3.68
C4 F8	2.22	0.29	4.31	8.05
C4 T4	2.07	-4.06	-4.54	-8.51
C4 T6	1.93	6.82	-10.74	-9.60
P4 O2	-4.13	1.33	-1.79	1.94
P4 F8	5.15	2.51	8.09	-0.73
P4 T4	-0.21	-9.61	-3.28	-5.82
P4 T6	1.75	-2.07	-5.38	-7.02
O2 F8	20.09	173.73	8.01	-15.24
O2 T4	0.32	-28.98	-7.65	-28.43
O2 T6	6.49	-7.13	-5.93	-10.86
F8 T4	1.72	-0.05	-0.04	-2.41
F8 T6	-1.04	10.02	3.73	10.51
T4 T6	4.58	11.86	1.88	-1.08

Interhemispheric: HOMOLOGOUS PAIRS

	DELTA	THETA	ALPHA	BETA
FP1 FP2	-2.34	-2.37	0.90	-0.56
C3 C4	1.64	-2.40	5.71	-3.45
O1 O2	1.41	2.08	-2.37	-5.47
T3 T4	-15.81	-35.28	160.49	10.49

	DELTA	THETA	ALPHA	BETA
F3 F4	-1.12	-1.21	6.53	-1.87
P3 P4	2.99	3.97	-0.46	-4.01
F7 F8	-153.27	-168.98	137.48	3.96
T5 T6	8.49	0.49	-12.33	-15.52

Z Scored FFT Phase Lag

Intrahemispheric: LEFT

	DELTA	THETA	ALPHA	BETA
FP1 F3	-0.15	0.13	1.12	-1.16
FP1 C3	0.57	0.38	0.95	-0.35
FP1 P3	-1.34	1.43	0.99	-0.04
FP1 O1	0.20	1.61	0.97	-0.52
FP1 F7	-0.54	0.16	0.67	-1.16
FP1 T3	-0.40	1.32	0.89	-0.52
FP1 T5	-0.75	1.52	1.14	0.02
F3 C3	0.97	-0.50	0.58	-1.61
F3 P3	0.73	1.23	0.66	-1.04
F3 O1	1.59	2.49	0.23	-2.06
F3 F7	-1.48	-0.10	1.69	-0.34
F3 T3	-0.19	0.21	1.23	0.02
F3 T5	1.51	1.50	0.61	-0.50
C3 P3	-1.77	1.61	-0.08	-0.03
C3 O1	0.06	2.09	-2.25	-1.84
C3 F7	-0.00	0.21	0.53	0.86
C3 T3	-0.17	-2.04	1.15	0.42
C3 T5	-0.63	1.37	-0.00	0.08
P3 O1	-0.82	2.12	-0.16	-1.70
P3 F7	0.34	0.90	-0.41	0.29
P3 T3	-2.41	0.89	-0.24	-1.81
P3 T5	0.22	-0.72	-0.17	-1.91
O1 F7	0.85	1.47	0.98	-0.40
O1 T3	0.18	1.45	-0.53	0.32
O1 T5	-1.31	1.80	0.74	-0.40
F7 T3	-0.00	0.85	-0.20	0.72
F7 T5	1.40	0.99	-0.24	-0.08
T3 T5	0.07	1.33	-1.36	-1.61

Intrahemispheric: RIGHT

	DELTA	THETA	ALPHA	BETA
FP2 F4	1.00	-0.31	0.20	-0.79
FP2 C4	1.16	-0.34	0.78	-0.77
FP2 P4	0.04	0.33	0.80	-0.40
FP2 O2	0.13	1.80	0.75	-0.37
FP2 F8	1.08	-1.24	-1.04	-1.29
FP2 T4	0.99	-0.33	-1.24	-0.40
FP2 T6	0.21	1.86	-0.42	-2.46
F4 C4	0.42	0.33	0.62	0.92
F4 P4	0.66	0.72	0.68	-1.11
F4 O2	1.31	2.25	0.33	-1.11
F4 F8	-0.86	-0.99	0.11	-0.16
F4 T4	-0.85	0.35	-0.29	0.26
F4 T6	-0.42	0.64	-0.05	-0.67
C4 P4	-0.88	-0.67	0.54	-0.56
C4 O2	1.01	0.44	0.08	-0.34
C4 F8	-0.73	-2.29	0.05	0.74
C4 T4	-1.16	0.04	0.04	0.21
C4 T6	-0.62	0.94	0.18	0.52
P4 O2	0.85	-0.36	-0.56	-0.50
P4 F8	-0.25	-1.05	-0.18	-1.47
P4 T4	-2.36	1.11	-0.15	0.06
P4 T6	-0.20	0.27	0.19	0.75
O2 F8	-0.00	1.47	-1.33	-0.27
O2 T4	-2.25	1.49	-0.26	1.32
O2 T6	1.55	1.22	0.45	1.69
F8 T4	-0.64	-2.05	-2.34	-0.42
F8 T6	-1.94	0.03	-1.00	0.09
T4 T6	0.15	1.29	-0.86	-1.01

Interhemispheric: HOMOLOGOUS PAIRS

	DELTA	THETA	ALPHA	BETA
FP1 FP2	0.57	1.25	-0.62	-0.79
C3 C4	-0.10	0.22	0.62	0.39
O1 O2	-0.19	0.11	-0.27	0.85
T3 T4	0.36	0.28	0.79	-1.79

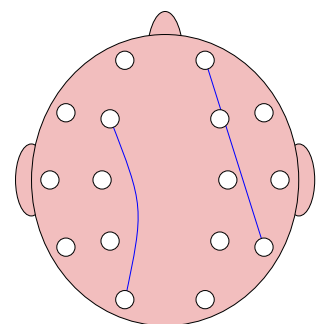
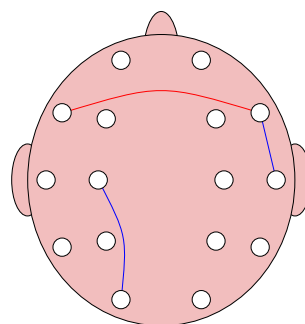
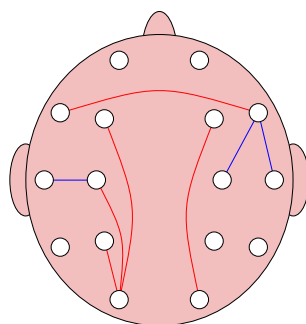
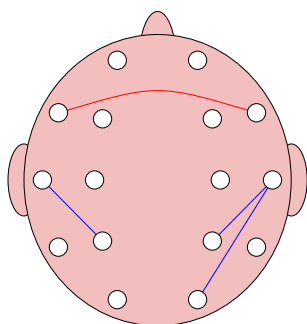
	DELTA	THETA	ALPHA	BETA
F3 F4	-0.55	-0.33	1.60	0.24
P3 P4	0.85	0.95	-1.52	0.74
F7 F8	2.12	2.89	2.22	-0.25
T5 T6	1.15	-1.51	0.01	0.60

Delta (1.0 - 4.0 Hz)

Theta (4.0 - 8.0 Hz)

Alpha (8.0 - 12.0 Hz)

Beta (12.0 - 25.0 Hz)

- ———— +
Z-Score >= 1.96- ———— +
Z-Score >= 2.58- ———— +
Z-Score >= 3.09